



KENNEBEC LAND TRUST

TOWN OF WINTHROP AND KENNEBEC LAND TRUST

MOUNT PISGAH COMMUNITY CONSERVATION AREA

Welcome to the Mount Pisgah Community Conservation Area (Also known as the Fire Tower parcel.)

This 94-acre conservation property is owned by the Town of Winthrop and is also protected with an easement held by the Kennebec Land Trust. This well-known and cherished landmark is part of the Kennebec Land Trust's larger 700-acre Mt. Pisgah Conservation Area. Stewardship responsibilities for the Fire Tower parcel are shared by the Town of Winthrop and the Kennebec Land Trust.

The 94-acre *Mt. Pisgah Community Conservation Area* includes the former Maine Forest Service fire tower, the tower access road and utility line, and a blue-blazed hiking trail that connects the parking area to the lookout tower. This community conservation property will remain forever as an undeveloped, open, and scenic landscape, and will be managed for non-intensive public uses and the protection of plants and wildlife.



Photograph: Emily Perkins

Public uses: nature observation, hiking, cross-country skiing, and hunting.

Trails: The main public access to the Mount Pisgah Conservation Area is from the parking lot on the east side of the Mt. Pisgah Road. A one-mile loop trail (two miles up and down) features the fire tower with views of the surrounding villages, lakes, foothill, and mountains.

Snowmobiling is allowed on Tower Road on the designated trail.

ATVs or motorized vehicles of any kind are not permitted.

Dogs: Out of respect for hikers and small children, dogs should be under voice command or on a leash. Please pick up after your pets.

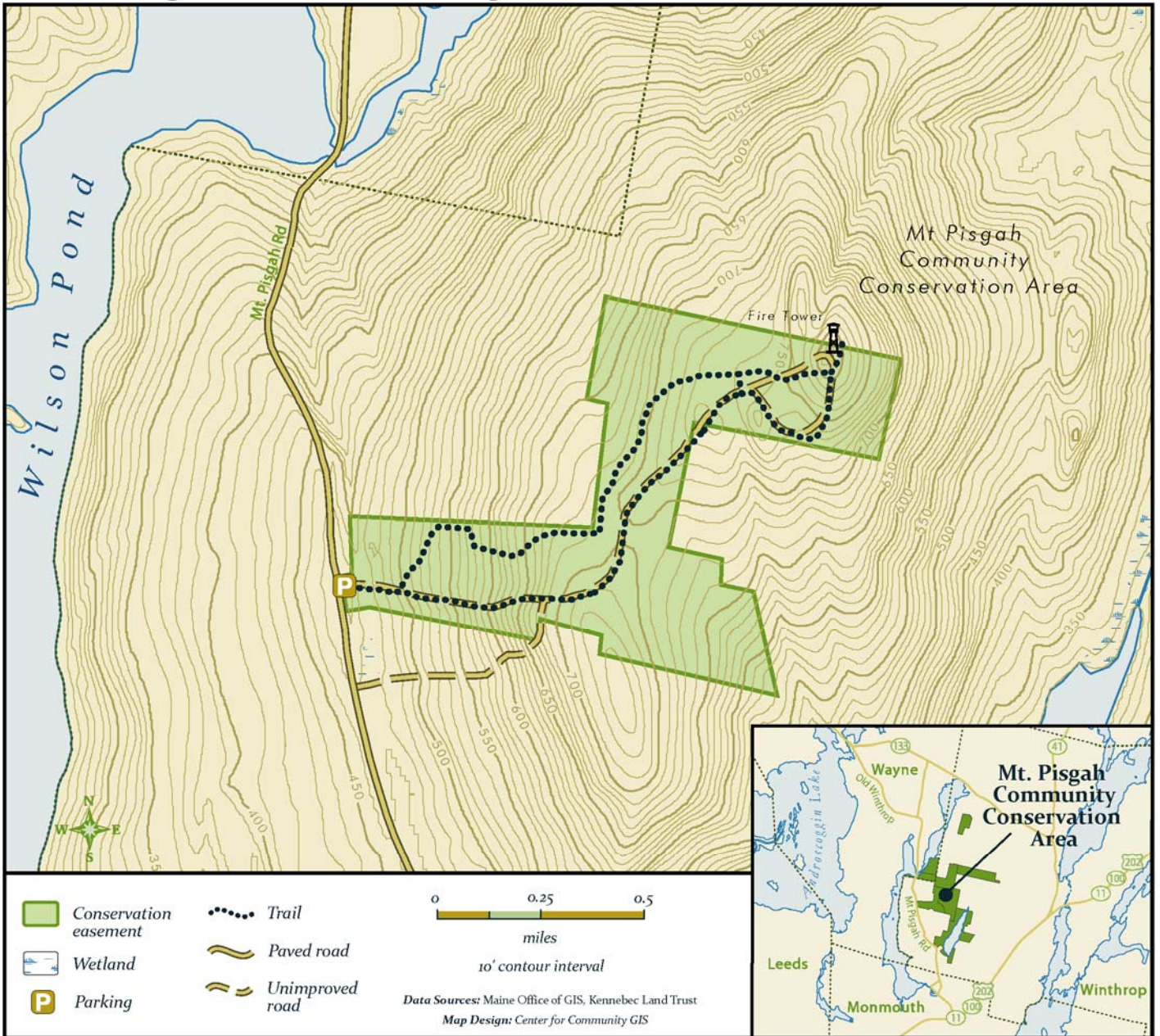
Directions: The parking lot on the Mt. Pisgah Rd is the trailhead for the blue blazed Tower Trail. It is a one mile easy/moderate trail climb to the 60-ft Mt. Pisgah fire tower, which is open to the public. On a clear day, the views are outstanding. From Rt 133 in Wayne turn south onto Fairbanks Rd. for 1.1 miles. At the end of the Fairbanks Rd. turn left onto the Mt. Pisgah Rd. Travel south for 1.7 miles on the Mt. Pisgah Rd, the parking lot is on the left.



The **Kennebec Land Trust** was formed in 1988 by local citizens who wanted to work cooperatively with landowners and communities to protect our regions natural features and working landscapes. KLT actively manages its protected lands through the efforts of its stewards, members, and other volunteers. For more information about KLT, or to become a member, contact us at 134 Main Street, Winthrop, Maine 04364, 207-377-2848. Or see our website: www.tklt.org.

Please Join Us!

Mt. Pisgah Community Conservation Area



94 acres ~ Owned by the Town of Winthrop; Conservation Preserve held by KLT