

# The Kennebec Land Trust NEWS

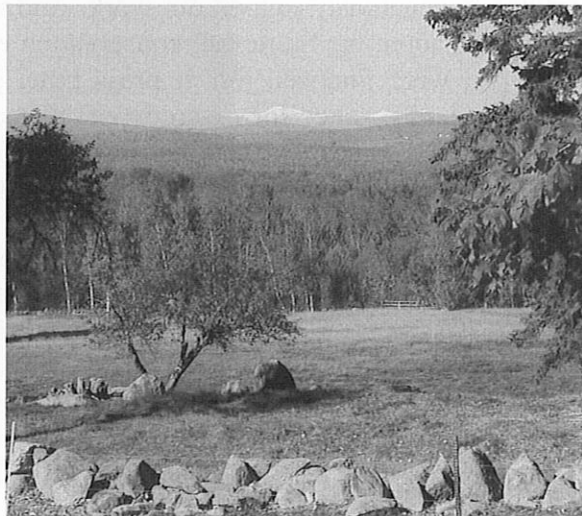


Volume 20, No. 1 / Spring 2003

134 Main Street Suite 2B Winthrop Maine 04364  
kennebec@ctel.net www.tkltr.org 207-377-2848  
Office Hours: Tuesdays and Thursdays 9:00-2:30

## Sturtevant Farm Conservation Area Created in Fayette

The spectacular view of Mount Washington from Arnold and Leda Sturtevant's property in Fayette will be enjoyed by generations far into the future, thanks to their generosity. Mr. and Mrs. Sturtevant have granted the Kennebec Land Trust a conservation easement on open land located on both sides of Baldwin Hill Road. The 22.5 acre property will be called the Sturtevant Farm Conservation Area. The area includes a parcel west of the road consisting of 16.5 acres and 6 acres of open pasture east of Baldwin Hill Road, located between the historic Fayette Baptist Church and equally historic Sturtevant Family Homestead. The conservation easement assures that the land will never be developed and that its scenic vistas will remain open.



*Autumn view from the picnic area in the Sturtevant Farm Conservation Area. The Presidential Mountain Range, including snow-capped Mt. Washington, is visible on the horizon, over 60 miles away.*

*Photo by Arnold Sturtevant*

The Homestead, built in 1784 and now a bed and breakfast known as Home-Nest Farm, has been in the family for eight generations. According to Mr. and Mrs. Sturtevant, "The preserved letters, journals and poetry of our family clearly record what an inspiration the view was for those who settled the area over two centuries ago. The majestic sweep of the panorama remains a refreshing, soul-liberating influence. It gives us great satisfaction to believe that it may now be protected against possible encroachment and preserved for future generations."

Stone walls, open pasture, and expansive views distinguish a rural property reminiscent of a time when much of the countryside was open land. Over the years, as agriculture has been abandoned, views such as this one have become increasingly few and far between.

This is the first time that the trust has accepted responsibility for conserving a property primarily for its scenic value. It is just a very beautiful place, and we deeply appreciate the foresight of the Sturtevants in protecting a treasured landscape. Picnicking will be available on a small parcel west of the road.

### Inside

- 2 President's Message
- 3 New Members
- 4 Main Street News
- 5 Notes from the Field
- 6 Bearnstow & Norris
- 7 Field trips



## President's Message

Dear Members,

If things go according to plan, the snow should be melting by the time you read this. But with this winter, I am not sure one can count on anything. I'm still thinking about the several occasions when the thermometer at our house hit minus 20, or when they closed Sugarloaf due to the cold on the day we went to ski. This winter was not predictable. But other things certainly are.

We have again had a successful membership renewal season, with new and long-time members continuing to generously support our work. And we continue to conserve land at a steady pace. You can read about the Sturtevant conservation easement in this issue, and we have two other projects that were finalized just at press time, so you'll read about them in the fall. It has become standard practice for me to expect that our Land's Committee will have one or more acquisitions for approval at each of our monthly Board meetings. That is a very happy thing in my book.

### **Board of Directors**

Andrew Fisk, President	Pittston
Glenn Hodgkins, Vice President	W. Gardiner
Tom Bartol, 2nd Vice President	Manchester
Amy Trunnell, Treasurer	Readfield
Diana McLaughlin, Secretary	Wayne
James Connors	N. Monmouth
Sarah Demers	China
Ann Judd	Kents Hill
Howard Lake	Readfield
Susan Liebling	Mt. Vernon
Robert Marvinney	Readfield
Jennifer McLean	Kents Hill
Jodi Michaud Federle	Manchester
Robert Mohlar	Readfield
Norm Rodrigue	Manchester
Debby Sewall	Hallowell
Clyde Walton	Kents Hill
Robert Weston	E. Winthrop
Henry Whittemore	Readfield

Our commitment to stewardship continues to develop and grow. We welcome the many of you who asked to be informed of stewardship events when they occur - you can count on hearing from us! Jim Connors, our stewardship chairman, and Theresa Kerchner continue to brainstorm on how to improve our stewardship and monitoring programs. Our properties have many important values, and we need to ensure that we care for all of them.

So please read through this newsletter and take note of what we are all accomplishing together. You will see a lot of new ideas and opportunities here - take advantage of what your land trust has to offer. There is a tremendous listing of activities on pages six and seven in response to your requests.

And, if you happen to be in Winthrop, stop by the office sometime to say hello.

In trust,

*Andrew Fisk*

### **Thank You!**

Many thanks to our newsletter contributors and especially to Debby Sewall and Jodi Federle, KLT Directors, Linda McGuire and Jim Perkins for the technical assistance with this issue.

#### **Contributors:**

Glenn Hodgkins, Andrew Fisk, Theresa Kerchner, Susan Liebling, Diana McLaughlin, Doug Scott, Debby Sewall, Arnold Sturtevant

## WELCOME TO OUR NEWEST MEMBERS!

Lillian Axelrod  
 John P. Beckwith  
 Charles & Sharon Bonney  
 Gordon & Joan Bragg  
 Diana & Judy Brooks  
 Charles & Kathleen Brush  
 Lawrence B. Buggia  
 Ian Burnes  
 Robert & Kathleen Carroll  
 Chuck Cohen & Mary Beth Paquette  
 Robert & Jeri Cohn  
 Ellerbe & Carol E. Cole  
 Charles S. Crandall & Family  
 Charles Crandall & Marian E. McGuire  
 Dennis & Avis Cripps  
 Stan & Joan DeOrsey  
 Stephen & Nancy Diamond  
 Thomas & Gail DiBiaso  
 John & Priscilla Draper  
 Jean M. Fallon

Evelyn Gerstenblith  
 Jason Grundstrom-Whitney  
 City of Hallowell  
 Don & Marge Ham  
 Ernest Hannon  
 Richard & Rita Howard  
 Susan Kaluzynski  
 Kathy Kellison & JoAnne LaFear  
 Mary G. Kerchner  
 Janet Laird-Lagasse  
 Stephen & Jeanne Langsdorf  
 Terri L. Leavitt  
 Richard Loon  
 John & Carla Lynch  
 John & Cathy McCue  
 Roger & Janet Michael  
 Shel Michaels  
 Donna & Thomas Mickewich  
 Paul & Eva Moore  
 Hope Olmstead  
 Mark & Kathy Ostrander

Bill & Joyce Perry  
 Austin & Marie C. Priest  
 Bruce Robinson  
 Scott, Nancy & Emily Schiff-Slater  
 Ganny T. Sciuk  
 Patricia O. Seaward  
 Stephen P. Schultz  
 Duane & Melody Smith  
 Loring & Barbara Smith  
 Mark & Kathy C. Smith  
 Jerry & Elaine Snider  
 Joyce T. Sterling  
 Arnold & Leda Sturtevant  
 Edward & Muriel Surowiec  
 Joseph & Kathleen Szakas  
 Elmer W. Twente  
 Anne W. Wallace  
 Allan & Christina Ward  
 Don & Faye Whitten  
 Archie Wing  
 Laverne P. Winn

### Richard Judd Joins KLT Advisory Board

The KLT welcomes Dr. Richard Judd, professor of history at the University of Maine, to our Advisory Board. Dr. Judd is the author of *Natural States: The Environmental Imagination in Maine, Oregon, and the Nation (forthcoming)*, *Common Lands, Common People: The Origins of Conservation in Northern New England*, and *Maine: The Pine Tree State from Prehistory to the Present*. He is also the co-editor of the Maine History Quarterly. We look forward to working with Dr. Judd on issues that relate to conservation and the history of KLT properties.

### Annual Meeting Save the Date!

The KLT annual meeting will be held on Sunday, August 24th. Please join us to enjoy and learn more about Mt. Pisgah.

### KLT Advisory Board

Mary Ellen Avery	Lincoln Ladd
Jerry Bley	Mort Libby
Seward (Pat) Brewster	Jon A. Lund
Peter H. Burbank	Charles McCarthy
Scott Cowger	Rupert B. Neily, Jr.
Wendy Dennis	Jeffrey Pidot
Caroline W. Farr	Diane Ryan
Lloyd Irland	Bruce Schatz
Jamie Isaacson	Lila Segal
Richard Judd	Jane G. Smith
Judy Kane	Ken Spalding
Roger Katz	Jym St. Pierre
Martha Kent	Benjamin Townsend
Ken Knight	



*View from Mt Pisgah Fire Tower to west, Androscoggin Lake, and Norris Island. Photo by Glenn Hodgkins*

## News From Main Street

### Our New Office and Staff

By now we hope that everyone has heard the news that we have a new home in Winthrop. Our sunny office is on the second floor of the 134 Main Street building, Suite 2B. Thanks to KLT board members and volunteers, we have office equipment, beautiful house plants and art work.

Last November I was hired to work for the Trust as the half-time Education and Stewardship Coordinator. My personal interests are botany and the history of the New England landscape, so I am looking forward to the field season when I can begin to learn more about the Trust's lands.

Thanks to member Mary Sturtevant, you will find our door when you see the beautiful fabric art of the KLT logo. Mary also donated the wall hanging in the open house photograph - a view of Androscoggin Lake from Mt. Pisgah. Thank you also to Bea and Laddie Horne for the lovely fern plant and the professional KLT office signs for our office and building entrances, and to Ann Judd and Ron Giard for the open office reception they coordinated on March 6th. If you have not had time to visit us already, please stop in!



*Theresa in the new office, Photo by Jim Perkins*

*Community Open House, March 6th, KLT Office  
Photo by Glenn Hodgkins*



### Wish List for the Office

Now that we have moved in and feel a bit settled, we have started a wish list for the office. Since we are beginning a lending and reference library, books are a high priority. We hope you will consider donating a book to the KLT library in your own name or in recognition or memory of a friend or family member.

Fortunately, we are right across the street from Apple Valley books. The owners, Eric Robbins and Rita Moran, are offering a 20% discount on almost any book that is purchased for the Trust. Eric and Rita will have book plates and a list of some of the books we hope to acquire. If you have a particular book that you would like to donate please just check in to be sure it was not another member's favorite.

In addition to books, we would also eventually like to own the following:

**A GPS unit  
Dissecting microscope  
Hand lenses  
Enamel pans  
Copy machine  
Large book case**

Thank you for supporting the Trust!



## Notes from the Field - Willows

Theresa Kerchner

*"Go and measure to what length the silvery willow catkins have crept out beyond their scales, if you would know what time o' the year it is by Nature's clock."*

The Journal of Henry David Thoreau, Volume XII, March 2, 1859

With winter yielding, the plants in our local fields and woods will soon be showing subtle signs that the days are growing longer and warmer. One of the earliest and most welcome botanical harbingers of spring is the appearance of silvery catkins on the branches of pussy willows (*Salix discolor*). Finding these catkins on a spring walk can be the starting point for learning more about this species and many others in the willow or Salicaceae family.

The willow family has many tree and shrub species - world-wide there are 386 species in two major genera, *Salix* (willows) and *Populus* (aspens). Pussy willows are one of the twenty-six species of willows found in Maine and are a common native shrub or small tree that is usually found in open areas in moist to wet ground.

Plants in the willow genus share a number of similar characteristics. The leaves are almost always alternate and have small associated stipules or leaf-like appendages at the base of the leaf. The buds of all willows have only a single cap-like scale that is prominent as the catkins open. All of the species have very small female flowers in catkins that can be pollinated by both wind and insects.

The silvery catkins that appear in March in Maine are the male or staminate flowers and since they are formed before the leaves appear they are quite easy to see in the field. The female catkins where the fruit will eventually develop are almost always borne on separate trees from the male catkins.

In addition to field guides, Henry David Thoreau's journals are filled with entries about various willow species. He notes the dates that pussy willow catkins begin to show beyond their scales, the diameter and height of black willows (*Salix nigra*), our largest New England native willow, and the presence of the rare alpine species, bearberry willow (*Salix uva-ursi*) on his July 8, 1858, hike to the summit of Mount Washington.

So, while you are out and about on KLT land or in your own backyard and fields, take advantage of those wonderful moments to learn a little botany!



*Pussy willow with male (staminate) catkins*  
Photo by Theresa Kerchner

## Camp Bearnstow Schedules Work Week, July 1-6 Saturday Walk and Talks Start July 12

Camp Bearnstow welcomes volunteers to help with clean-up activities over the week of July 4th. Located on the shores of Parker Pond in Mt. Vernon, Bearnstow is a beautiful place to spend time during the summer. Projects include building repairs and grounds maintenance. There are no skills required, you can come for as much or as little time as you wish, and you are guaranteed to meet some wonderful people.



*Canoeing at Camp Bearnstow  
Photo - Camp Bearnstow*

Every Saturday morning at 10 a.m., beginning July 12, the camp will offer environmental walks exploring topics such as lakeside flora, measuring water quality, and runoff prevention. These educational programs are free and open to the public. Already on the schedule is the Basic Invasive Plant Patrol (IPP) workshop for August 2nd with Roberta Hill from the Volunteer Lake Monitoring Program (VLMPP). This is an excellent opportunity to learn more about non-native invasive aquatic plants.

For further information, call Sue Liebling at 293-2628. To learn more about these and other summer activities at Bearnstow, check out the camp's website at [www.Bearnstow.org](http://www.Bearnstow.org).

### Norris Island News

Norris Island, our island in Androscoggin Lake, is unusual among KLT-owned properties in that it includes a "dwelling" that KLT manages. This presents some unique challenges. A previous owner built the cabin prior to KLT's purchase of the island in 1997. Although its construction is solid, the exterior of the cabin had never been painted or stained, and time and the elements were taking their toll.

In the autumn of 2002, KLT volunteers performed some much-needed maintenance on the cabin at Norris Island. The cabin now has a complete coat of exterior wood stain and other minor repairs have been made.

Volunteers Bill Hayes, Adam Levesque, Diana McLaughlin and Steve McLaughlin deserve thanks for their generous donations of time and labor at the cabin site. KLT also thanks painter Mike Lambertson, who offered professional advice on-site along with his donation of some of the materials, so that we were able to "do it right."

But the work is not quite finished. A second coat of wood stain needs to be applied, the trim has to be painted, and some other touch-ups need to be done in 2003. No experience or special skills are needed! If you have never visited the Norris Island cabin, here is the perfect opportunity! If you would like to help in this effort, please give us a call at the KLT office at 377-2848 or send an e-mail to [kennebec@ctel.net](mailto:kennebec@ctel.net).

For information about camping or cabin reservations for Norris Island please call: 685-4616.



## Spring and Summer KLT Field Trip Schedule



We hope you will join us this spring or summer for a bird or botany walk, geology field trip, or the opportunity to learn more about vernal pools or invasive plants. Please R.S.V.P. to the KLT office, 377-2848, so we can keep track of the number of participants.

**April 26th** Bird walk with Jim Miller to **Nancy's Bog** in Winthrop

7:30 a.m. - 9:30 a.m. Meet at KLT parking area on Bog Road with binoculars and a bird book.

**May 10th** Bird walk with Jim Miller at **Curtis Homestead Conservation Area**

7:30 a.m. - 9:30 a.m. Meet at the Curtis parking lot, Leeds with binoculars and a bird book.

**May 17th** Vernal pool monitoring - Mary Sturtevant & Theresa Kerchner

**Besse Historical Conservation Area** 9:00 a.m. - 11:30 a.m. Wear boots!

Meet first at KLT office, 134 Main Street, Suite 2B Winthrop at 9:00 a.m. for short slide show.

**June 7** Geology Field Trip with Maine State Geologist, Bob Marvinney, **Curtis Homestead**

**Conservation Area** 9 a.m. - noon Meet at the Curtis parking lot, Leeds

**July 13** Field Identification of Invasive Plants with Theresa Kerchner and Jane Davis

11 a.m. - 1 p.m. Meet at the Ladd Recreation Center in Wayne, Gott Road.

**August 2** Basic Invasive Plant Patrol (IPP) workshop with Roberta Hill, VLMP

**Camp Bearnstow**, Parker Pond, Mt. Vernon; For times and info, call Sue Liebbling at 293-2628.

**August 9** Botany expedition to **Perkins Property** in Wayne with Theresa Kerchner. Part of the

Great Wayne Fair celebration. Meet at Wayne Yacht Club at 9 a.m. Bring a canoe or kayak.

Thank you to our field trip leaders: Jim Miller, Mary Sturtevant, Jane Davis, Roberta Hill and Robert Marvinney for taking the time to lead these outings.



### Handy Directions to KLT Properties

We are beginning to work on brochures and maps for our properties with trails. Feel free to call the office with questions about access. Thanks to our webmaster, Julie Mecham, our web site will include these directions.

**Curtis Homestead** - Gazetteer Map #12. From Route 202 in Monmouth take the Bog Road to the west. The KLT parking area, with a sign, is about 1.5 miles on the right.

**Nancy's Bog** - Gazetteer map #12. From Route 202 in Monmouth go northeast about .25 miles on the Old Lewiston Road. Take the first left on to North Main Street. Go about .5 miles and turn northwest on to New Street. At a stop sign New Street turns into the Mt. Pisgah Road. From the Mt. Pisgah Road go north about .7 mile to a dirt road, the Bog Road. Turn north. The KLT parking area is on the right after about 200 yards.



*Ron Joseph, March 6th Community Ornithology Series  
Photo by Glenn Hodgkins*

### **Community Ornithology Series**

The March community ornithology series opened with an inspiring presentation by Ronald Joseph, Wildlife Biologist, with the US Fish and Wildlife Service. Ron spoke to over sixty attendees about Maine's diverse habitats and our great variety of bird species. He also emphasized that land trust acquisitions are critical to bird conservation efforts throughout the state of Maine.

### **Thanks For Helping Us Move In!**

KLT Board Members

Andy Fisk

Norm Rodrigue

Howard Lake

Jim Connors

Debby Sewall

Doug Scott, KLT Membership Secretary

Everyone at Harper's Development

Tina Apgar - Apgar Office Systems

Beth Pochopien, Occupational Therapist

Al Graceffa at Transco

Stan Davis

Mary and Tom Sturtevant

Laddie and Bea Horne

**KLT**

**134 Main Street Suite, 2B**

**Winthrop, ME 04364**

**377-2848**



**THE KENNEBEC LAND TRUST**

PO Box 261, Winthrop, ME 04364

NON-PROFIT ORG  
U.S. POSTAGE

**PAID**

PERMIT #66  
WINTHROP, ME

