

The Kennebec Land Trust NEWS

Volume 22, No. 2 / Fall 2005

134 Main Street #2B
Winthrop, Maine 04364
(207) 377-2848

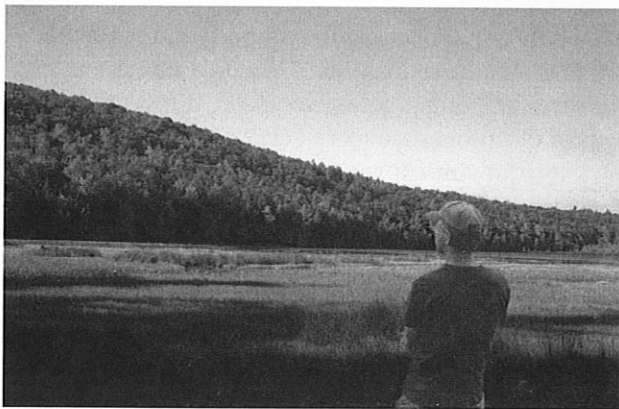
kennebeclt@ctel.net
www.tklr.org

Office Hours
Tues/Thurs. 10am - 3pm



Remote Shedd Pond and Surrounding Gannett Woods Permanently Protected

Jeff Janell, KLT Gannett Woods Steward



*Jeff Janell, Shedd Pond
Photograph: Norm Rodrigue*

Spring and summer have seen a series of exciting events around the otherwise quiet waters of Shedd Pond in Manchester. The 120-acre Gannett Woods, including forty-eight acre Shedd Pond, with more than a mile of undeveloped shoreline, was recently donated to the Kennebec Land Trust by John and Pat Gannett of Manchester, so that it may remain undeveloped and open to the public.

When we become stewards of a new property, we often inventory plants and bird life and plan for possible trails. In early June, Ron Joseph of the U.S. Fish and Wildlife Service helped with an early morning birding inventory. We saw loons, mergansers, a red-shouldered hawk, a pileated woodpecker, and a variety of warblers, vireos, and flycatchers

- 48 species in all. Ospreys and great blue herons have also been observed repeatedly, along with nesting loons with one chick.

In late June, Maine botanist Arthur Haines led a walk on the property. We focused on the eastern side of Monk's Hill, a mixed hardwood forest sloping down to the pond. Our primary goal was to find the rare broad beech fern so we could be sure that a new trail would not negatively impact these plants. We found many of these ferns in this rich and interesting habitat, along with a variety of uncommon sedges. Several invasive species were also identified, and a plan of control is being put together.

This year KLT has also been working closely with the Manchester Long Range Planning Committee trails subgroup and the New England Forestry Foundation, owners of 700 adjacent acres of protected working forest, to coordinate trail planning and usage. A trail hub is planned at the North Manchester Meeting House, with access to Shedd Pond and miles of other multi-use trails. At this initial stage, KLT is planning to continue existing uses of Gannett Woods, including snowmobiling, hunting, and hiking. ATV and other motorized vehicle usage will be banned, as it is on adjacent NEFF properties. We are considering additional trail options, including a potential connection to KLT's Wyman Forest on Monk's Hill.

On a warm August afternoon, KLT board members, staff, and stewards, along with volunteers Dallas and Jan Folk, had the honor of escorting Pat and John Gannett to the pond. We had a wonderful walk together. We encourage you to visit this hidden pond just a few miles from our state capital, and to participate in planning and developing trail resources in the area. Please send us any news or notable sightings from your visit.

PRESIDENT'S MESSAGE



Dear fellow KLT members,

If you want to be surrounded by nature and feel good about your local land trust, go out for a walk on a KLT property this fall. Discover Jamies Pond, the focus of this year's annual appeal, with dark trees contrasted against Maine-blue skies and the sparkling water of the pond. We have other great trails as well, including new ones on the Reynolds Forest in Sidney, Macdonald Conservation Area in Readfield and Wayne, the Curtis Homestead in Leeds, the Tyler Conservation Area in Readfield and Gott Pasture in Wayne. Check out our awesome website, www.tkl.org, for a map and directions to our properties.

KLT's success at conserving land and offering recreational opportunities is due to a huge amount of volunteerism. Lawyers, geologists, ornithologists, accountants, engineers, carpenters, writers, jewelers, farmers, photographers, artists – if you have a talent or skill, there's a good chance it will get tapped. And if you don't think you have one, we offer training, plus there's always hands-on work to be done.

Our challenge now is to maintain high standards for stewardship of an ever-growing list of properties. A volunteer steward works with the Trust to develop a plan for each parcel. This may entail opening the property to the public, although some properties have sensitive plant and wildlife habitats that remain undisturbed. We do a fair amount of trail building and monitoring. Other projects include creating brochures and doing botanical and bird inventories for each property. These time-consuming, labor-intensive activities make our properties more accessible, welcoming, and educational. I cannot say enough about our stewards - I hope they know how much we appreciate their work. If you are willing to get involved, make sure to contact Theresa Kerchner, Stewardship and Education Director.

Getting to know more about land trusts in general and Kennebec Land Trust in particular has been my "adult ed" project over the past few years. It's been a lot of fun and remains a challenge, and the people I have met along the way have earned my utmost respect. Outgoing President Glenn Hodgkins has generously shared his expertise and insights; I'd like to take this opportunity to thank him on behalf of the organization for his leadership and for setting a wonderful example of volunteerism, KLT-style.

Our volunteers are amazing. Please consider becoming one – you're very likely to learn something and meet some great people, and even more likely to get some fresh air and visit some beautiful places.

In Trust,
Deb Sewall

BOARD OF DIRECTORS

Deb Sewall - President, Hallowell
Robert Marvinney - 1st Vice President, Readfield
Jean Grigsby - 2nd Vice President, Winthrop
Amy Trunnell - Treasurer, Readfield
Andrew Fisk - Secretary, Pittston

Tom Bartol, Manchester
James Connors, N. Monmouth
Sarah Giffen, Chelsea
Glenn Hodgkins, West Gardiner
Jean Grigsby, Winthrop
Ann Judd, Fayette
Howard Lake, Readfield
Susan Liebling, Mt. Vernon
Diana McLaughlin, Wayne
Tom Mickewich, Manchester
Robert Mohlar, Readfield
Jeff Pidot, Hallowell
Norm Rodrigue, Manchester
Clyde Walton, Fayette

KLT ADVISORY BOARD

Dr. Mary Ellen Avery
Jerry Bley
Harold Burnett
Senator Scott Cowger
Hon. Kenneth Curtis
Elizabeth Davidson
Bill Dunham
Caroline Farr
Peter Geiger
David Gibson
Cheryl Harrington
Lloyd Irland
Mark Johnston
Richard Judd Ph.D.
Judy Kane
Martha Kent

Gloria & Lincoln Ladd
Barbara & Mort Libby
Jon Lund
Douglas & Jessie Macdonald
Kevin Mattson
Patricia Mooney, Ph.D.
Rupert Neily
Dianne E. Ryan
Jean Scudder
Jym St. Pierre
Benjamin Townsend, Esq.
Robert Weston

KLT STAFF

Doug Scott
Membership Secretary

Theresa Kerchner
Stewardship and Education Director

KLT NEWS EDITORS

Theresa Kerchner, Deb Sewall,
Janie Matrisciano, Beth Craigie

VOLUNTEER WEBMASTER

Julie Mecham

NOTES FROM MAIN STREET

Theresa Kerchner, Stewardship and Education Director



Thoughtful stewardship of our 2,600 acres of conservation land is a high priority for KLT, and this has been a particularly busy year for us. Thanks to KLT's stewards, board members, plein-air artists and field volunteers, we built trails, removed invasive plants, enjoyed field trips on our conservation properties, monitored and inventoried plant and animal life, and our more artistic members painted beautiful scenes of KLT lands.

I am very fortunate to work closely with forty dedicated property stewards, board members Andrew Fisk, Sarah Giffen and Sue Liebling, chairperson Diana McLaughlin and Stewardship Committee members Brooke Barnes, Beth Craigie, Jane Davis and Paul Johnson. Our committee focuses on long-term planning and policy development and stays in communication with KLT's very active Lands Committee, chaired by Bob Mohlar. Brooke, Paul, Beth and Jane assist with many of our on-going responsibilities including baseline documentation, inventory and trail development and orientation for new stewards.

This year, several projects that had been in the planning stages at the Reynolds Forest (see p. 3), Gott Pasture Preserve and the Tyler Conservation Area were completed. In September, steward Charlie Jacobs and the Maine Conservation Crew, under the leadership of Karl Gilbert and KLT trails volunteer Paul Johnson, developed a beautiful 1.25-mile loop in the Gott Pasture Preserve. This path highlights impressive red oaks, white pines, glacial erratics and beautiful shoreline on Wilson Pond. Many thanks to the Fields Pond Foundation in Waltham Massachusetts and Bob, Gloria and Lincoln Ladd for funding the MCC work week. Gott Pasture is important wildlife habitat for osprey, herons, blue-spotted salamanders, wood frogs and many other creatures. (*Due to sensitive wildlife, the Stewardship Committee made the decision not to allow dogs on the Preserve.*)



*MCC Crew, Charlie Jacobs & Paul Johnson
Gott Pasture Trailhead
Photo: Lois Strickland*



Tyler Dedication - Photograph: John Barnes

Tyler Conservation Area steward Peggy Barnes worked throughout the year with former Stewardship Chair Jim Connors, neighbors in Readfield, volunteer sign maker David Kahl and the Augusta Unitarian Universalist youth group to plan trails, a parking area and a KLT sign. Last month, on an unusually warm and rainless Saturday, Peggy, KLT Board President Deb Sewall, Jim Connors and the Tyler Family welcomed the community to this conservation land and officially opened the trail.

As the year comes to an end I send a warm thank you to former KLT President Glenn Hodgkins for his two years of thoughtful and wise leadership. In addition, after many years, former Stewardship Committee Chair Jim Connors is now hard at work with the KLT Lands Committee. Thank

you Jim and Glenn for your vision and leadership.



Photograph: Jym St.Pierre

Art and Nature on KLT Lands

Our March, 2005 landscape painting and conservation presentations provided the inspiration for KLT's spring and summer plein-air programs at the Sturtevant Farm Scenic Area, Vaughan Woods and Gott Pasture Preserve. Artists Judy Schuppen, Marc Poirier and Lois Strickland and KLT members painted beautiful scenes and images of our conservation lands.

Please join us for our opening art show

March 12th, 2006 ~ 6 - 8 pm

Slate's Restaurant, Hallowell.

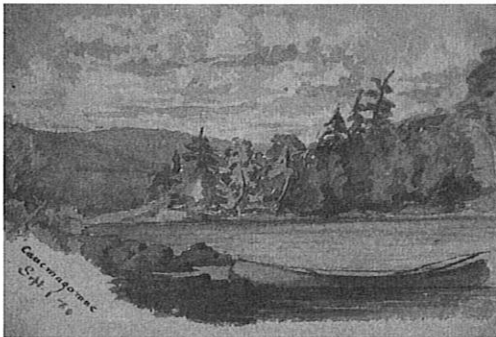
*The KLT exhibit will be on display
from March 12th to April 9th.*

The Paintings of Ellen T. Vaughan

David Gibson, Vaughan Homestead Foundation

Ellen T. Vaughan was born in 1853 in Boston and died in 1934 at the Vaughan Homestead after more than 50 years of marriage to William Warren Vaughan. She was a philanthropist who supported many causes and had a lasting impact on her family and friends. Her wonderful watercolors of Maine landscapes and plants lend a strong sense of place and natural history study to the Vaughan Homestead.

Ellen grew up in Boston high society at a time when it was thought to be both morally and physically beneficial to "rough it." From the early 1870s through the first decades of the 20th century, Ellen and William took three-week trips into the Maine wilds with their friends and guides. A talented landscape artist, Ellen left a priceless record of what the Maine Woods looked like and how people of wealth and "society" vacationed along the lakes, ponds, and rivers of north-central Maine.



Caucomgomoc Lake

Painting by Ellen T. Vaughan, 1870

Photo by Jym St. Pierre

Ellen's journals preserve vivid details of the trips, which required several trains and stagecoaches, and finally the steamboat waiting at Greenville. Preceding these well-to-do travelers were the skilled local guides, cooks, and Native Americans who had been hired to set up their camps, build their fires, and cook their meals. A trip in 1875 began like this:

"Traveled to Bangor. It was hot and dusty but we kept up a lively conversation. Arrived at 7 and squeezed into the hotel...we sat on the floors of our various rooms with the contents of our trunks strewn around, struggling to reduce our necessities to their smallest compass....very early breakfasts, the rest of the men came up in the night train....

We were all in camping dresses and astonished the natives

not a little. Left at 7:30 by train. The guides got in at Old-town...we finally got out at Abbott and by much pulling and hauling we and our 'truck', 14 people in all were got into stages and trotted off to Greenville through the heat. At 5 we got on board the steamer and sailed towards Kineo which was blue and beautiful against the evening sky...slept on the soft side of the steamer floor to be ready early in the morning. Aroused in the pale half moon light at 4:15, paddled through the mist to the wharf at the N. East carry...walked through two miles of bare stumps to the West Branch of Penobscot and saw at last our beloved canoes and the beautiful river...."

TAX LAW REVISION ON CHARITABLE DONATIONS

The Land Trust Alliance has notified us that federal legislation regarding cash donations to charities is being enacted. The new provision exempts all cash donations to charities made by individual taxpayers from the 50-percent income limitation and the phase-out of itemized deductions, so long as the donations are made before January 2006. This applies to all charitable donations, whether or not they are working on hurricane relief. Although few donors of cash to land trusts run into the 50% of AGI limit, many will receive higher deductions for cash gifts because of the exemption from the phase out. Note: this applies only to cash donations, not to gifts of property of any kind.

KLT WISH LIST

35 mm camera for taking slides

Monetary donations for a new computer, monitor, software and ergonomic desk for the KLT office

Volunteers with surveying or GPS and GIS skills

YOUR INVESTMENT IN CONSERVATION

Over the past 17 years member investment in KLT has conserved:

- 43 properties
- 2,600 acres of forests, fields, hills and wetlands, protecting wildlife habitat and water quality
- 6.8 miles of shoreline on lakes, rivers and streams, providing public access and protecting scenic views
- 16 miles of trails for hiking, skiing, snowmobiling & wildlife viewing

Due to the generosity and support of our members, our children and grandchildren will have the privilege of experiencing these woods and waters in the same way that previous generations have. Thank you.



Shedd Pond, Photograph: Howard Lake

Thank You for Supporting KLT

Peggy Barnes and Family
Brooke Barnes
Andy Bosworth
Don Cameron,
Maine Natural Areas Program
Ginny Coady
Beth Craigie
Elizabeth Davidson
Jane Davis
Chris Dimeo
Eric, Autumn and Sierra Doucette
Tom Feagin
Dallas and Jan Folk
Ellen, David & George Gibson &
Vaughan Homestead Foundation
Judith Graber
Arthur Haines
Peter Hirsch, *Camp Androscoggin*
Bea Horne
Charlie Jacobs
Jesse Jacobs

Jeff Janell
Paul Johnson
Ron Joseph, *USFWS*
Dave Joynt, *Stihl Inc.*
Dr. Richard Judd
Gloria, Lincoln and Robert Ladd
David Kahl
Edward Kallop
Judy Kane
Kent's Hill School Students & Advisors,
George Dunn & Jim Smucker
Kramer's Inc, Sidney, Maine
Ed Lake
Mike Lambertson
Kara Lanahan
Mort and Barbara Libby
Maine Conservation Corps
Janie Matrisciano
Chris Mattrick and *NEWFS*
Steve McLaughlin

John Melrose
Julia Milne
Jeremy Pare
Daniel Perkins
Raquel Ross & Rob Goodrich
Syd Sewall
Cheryl St. Pierre & Dorothy
Spaulding, *ME Mycology Assoc*
Jym St. Pierre
Beth Shattuck
Dave Stevenson
Arn and Leda Sturtevant
George Viles
Karen Fisk & *Augusta Unitarian*
Universalist Youth Group

Stan Davis, *Technology Support*
Jane Andrews & Mary Sturtevant
Office and field assistance

Reynolds Forest - A Year of KLT Activity

Theresa Kerchner, KLT Stewardship and Education Director



*Past Pres. Glenn Hodgkins & Bea Reynolds
Photograph: Theresa Kerchner*

If you passed the entrance to the Reynolds Forest on the River Road this year, you might have noticed that it was a busy time for KLT in Sidney. Steward George Viles and many other volunteers opened new trails in the thirty-five acre preserve, held a sign and trail dedication program, created a map of the property, and initiated an invasive control project. Many thanks to everyone who worked with George this spring, and a warm thank you to the members of the Reynolds Family who attended the June dedication program.

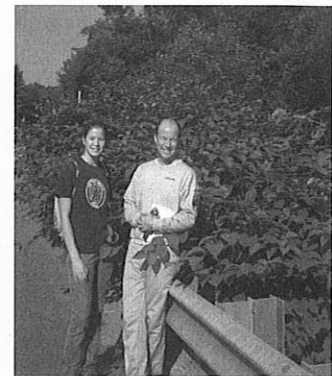
The Reynolds invasive control project is funded by the U.S. Fish & Wildlife Service Partners for Fish and Wildlife Program and aims to control invasives without the use of herbicides. Focused on the floodplain and upland forest, this multi-year ecological and educational project is a small but important effort that will highlight

the importance of biodiversity and the relationships between wildlife and native plants. Contract employees Brooke Barnes and Jeremy Pare used KLT's new brush saw (Thank you *Kramer's Inc* of Sidney.) to cut more than a quarter-acre of Japanese knotweed, honeysuckle, and black locust near the road and the brook. This summer, contract employees, Daniel Perkins and Beth Shattuck removed a great deal of non-native honeysuckle. KLT volunteer Kara Lanahan, a Colby College graduate, is helping KLT design a study that will document this project.

Invasive Plant Control Project

Daniel Perkins and Beth Shattuck, KLT Summer Contract Employees

A visitor approaching KLT's Reynolds Forest in Sidney merely three months ago would have been appalled at the number of invasive plants that had taken over the property. Bush honeysuckle was everywhere: along the steep embankments, through the forest, and bordering the field. We were hired as summer contract employees by the KLT specifically to eradicate as much of the honeysuckle as possible. We removed approximately 239 plants of many different sizes. During hours spent at the Reynolds Forest we came across a variety of wildlife. The largest animal we saw was a deer; we also saw many deer tracks along the brook. We saw a snapping turtle in the brook, which is also home to many small fish, frogs, and crayfish. The skies were full of many species of birds. The removal of honeysuckle will be good for wildlife because it will allow native vegetation to return to the banks of the brook.



*Brooke Barnes & Beth Shattuck
& Knotweed
Photograph: Theresa Kerchner*

Tips for removing honeysuckle on your own property

- BE SURE that you have correctly identified the plants that are to be removed.
- Hang all plants upside down so that the roots will dry.
- Tamp or stomp down the soil after removing plants, to hinder seed germination.
- Remove all roots, if possible, because those left will re-sprout.
- If plants prove to be too large to pull up, lop off all branches and retry.
- Rock the base of the plant back and forth to loosen the roots. If the plant is too large to remove at all, cut back its branches when they bear leaves, as this will eventually starve the plant of energy.

Thank You Jamies Pond Campaign Donors

KLT is pleased to announce that we have met our \$18,000 fundraising goal. Your generosity means that the trust can pay off the loan we had taken to acquire an 18-acre lot adjacent to Jamies in Manchester. By adding to the preserve, we have enhanced both its conservation value and the recreational opportunities that make Jamies Pond an 800-acre treasure right in our own backyard!

Jean & Lewis Allen
Robert Anderson & Nancy Hasenfus
Mr. & Mrs. Daniel L. Auclair
Peter Barotz
N. Warren & Christine Bartlett
Thomas Bartol
Ellen Beals
Nicholas Bennett
Frederick Best
Mary Duke Blouin
Veronica Boucher
Carol Brewster
Jane & Hank Burr
Richard & Virginia Burrill
Jim & Susan Caldwell
Sing Cheong & Alison Chu
John Clark
Robert & Jeri Cohn
Stephen & Lauren Coleman
Jack Comart
Ross Conley
David Courtemanch
Steve Crandall & Marian McGuire
James & Cecilia Cumming
Thomas & Wendy Danielson
Dale Demers
Sarah Demers
Dana Devos
Thomas & Elizabeth Dwyer
Joseph & Ruth Emerson
Jean M. Fallon
Jack & Jane Farady
Thomas & Jodi Federle
Judith Feinstein
Andrew & Karen Fisk
Clifton & Jean Fletcher
John & Patricia Gannett
Peter Geiger
Elaine Gershman
Margaret & Alan Grometstein
Larry & Rachel Grygiel
Don & Marge Ham
Sue & Roger Hanson
Allan & Libby Harville
Garry Hinkley
Glenn & Sara Hodgkins
Julian Holmes & Audrey Marra
Jeanette Hopkins
Leonard & Brigitte Horne

Peggy Horner
Carol Saunders & Douglas Ide
Ernest & Lori Johnson
Paul Johnson
Nancy Locke Johnson
Kevin & Judy Kane
Brian Kent & Janet Pence
Mary Kerchner
H. Winston & Christine Kipp
Ron Kreisman & Roberta deAraujo
Judith Graber
Paul Kuehnert
Robert Ladd
Janet Laird-Lagassée
Howard & Brenda Lake
Paul Lariviere
Nancy R. Liversidge
Scott Longfellow
Erik Lund
Jon Lund & Joan Sturmthal
Mary Ellen Martinelli
Janie Matrisciano
Sally McGonigle
Stephen & Diana McLaughlin
Jennifer McLean
Dr. & Mrs. Alex McPhedran
Ernest & Joan McPherson
Tom & Donna Mickewich
Lori Miller
Robert & Joan Mohlar
Phil & Gwen Mohlar
Marilyn R. Mollicone
Diane Moongrove
Dr. & Mrs. Stewart C. Myers
Beth A. Nagusky
Joseph & Margaret Newhouse
George & Hilary Nickles
Joseph & Martha Nielsen
Judith H. Nisbett
Eric & Heather Nisch
Carol Oberdorfer
David Osborne
Joseph Bauer & Mary Parlee
Astrid & John Pehek
James Perkins & Theresa Kerchner
Katy Perry
David F. Petherbridge
Jeffrey & Ginny Pidot
William Pond

Peter & Sandra Prescott
Carol Profy
Stephanie & Larry Ralph
Lynn E. Randall
George & Joan Richardson
Dr. & Mrs. Harry B. Richardson
Norm & Lynne Rodrigue
Alice Rohman
Jeffrey Romano
Roger & Margaret Rosenkrantz
Robert & Aloha Russ
H. Allen & Dianne Ryan
Lee Schepps
Doug & Ingrid Scott
Sydney & Deborah Sewall
James & Karen Simpson
Mr. & Mrs. Philip Simpson
Carol Mansfield & Andy Smith
Tim & Luvia Sniffen
Fred Snow
Elaine Somerville
Tony M. Sousa
Kenneth & Susanne Spalding
Constance Spellman
Ms. Marjorie L. Spencer
Jym St. Pierre
Paul & Julie Stanley
Douglas & Holly Stevenson
Roberta Swift
Joe & Kathleen Szakas
Dorothea Thacher
Derrick & Wendy Tooth
Ben Townsend & Dorcas Miller
Phillip & Marjorie Tribou
Amy Trunnell
William & Debora Uliasz
Jack & Mary Ann Vondra
Richard & Josephine Wagner
Clyde & Patricia Walton
Margaret Weaver
Catharine & Sumner Webber
Peter & Gwen White
Marshall Wiebe
Diane Williams
Alan & Clarissa Williamsen
LaVerne Winn
Baron & Janet Wormser
Milton R. Wright

KLT Annual Meeting 2005

At this year's annual meeting at Maple Hill Farm in Hallowell, outgoing President Glenn Hodgkins and Stewardship and Education Director Theresa Kerchner described a year of incredible growth for the Kennebec Land Trust. Our income and membership were up substantially, allowing us to cover necessary expenses that increase as we acquire more property. More than half the increase in income was from our most generous members becoming even more generous. Our members and volunteers have allowed us to accomplish an amazing amount of conservation since our founding in 1988. KLT is now responsible for the conservation of over 2,600 acres in eleven towns, including about seven miles of undeveloped lake and pond shoreline and several large lake islands. We now have approximately sixteen miles of trails on fourteen properties.

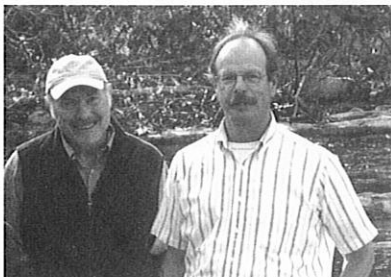
There are many people volunteering extensive time to KLT; we thanked some of them at the annual meeting: Sarah Demers, Jennifer McLean, and Jodi Federle for their outstanding service as board members over the last several years; board member Norm Rodrigue for his energetic efforts in helping KLT reach new levels of success; and Mort and Barbara Libby, Advisory Board Members of the Year, for their work on and funding of the spectacular new Curtis Homestead brochure. George Viles, Jane and Stan Davis, and Beth Craigie received Outstanding Stewardship Awards, and Julie Mecham received our Outstanding Volunteer Award for her long-term efforts in creating and maintaining our website. If you see any of our treasured volunteers in the grocery store, please thank them again.



*KLT Development Chair
Norm Rodrigue &
Past President Glenn Hodgkins*



*Pat and John Gannett &
Past President Glenn Hodgkins*



*KLT Steward George Viles (left)
& Past Stewardship Chair Jim Connors*



*KLT Webmaster,
Julie Mecham & Past President
Glenn Hodgkins*

Thank you to Everyone Who Assisted with our Annual Meeting

Ann Judd
Ron Giard
Maple Hill Farm Bed & Breakfast
Scott Cowger & Vince Hannan
Manchester Meeting House
Reverend Stan Moody
Jeff Janell
Richard Judd
Tom & Donna Mickewich
Dallas and Jan Folk

Photographs: Jym St.Pierre

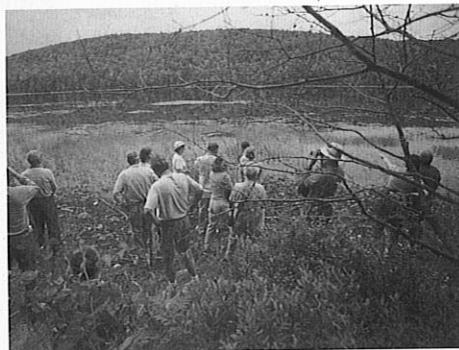


*Curtis Annual Meeting Field Trip
Photograph: Jym St. Pierre*

mile of undeveloped shore frontage on Shedd Pond. The property was donated by long-time KLT members and supporters John and Pat Gannett of Manchester, who had owned it for nearly fifty years. The acquisition is especially significant because it is adjacent to two other conservation properties. Our second acquisition this year is a conservation easement on the Vassalboro Wildlife Habitat, 167 acres of woods and wetland and our first property in Vassalboro. The donor of this easement, who wishes to remain anonymous, is very happy that the property will forever protect wildlife habitat and the water quality of Webber Pond.

We'd like to welcome Jeff Pidot of Hallowell, who is coming back to the board, and Sarah Giffen of Chelsea, who is joining the board. We have a new slate of officers, with Deb Sewall as President, Bob Marvinney as 1st Vice President, Jean Grigsby as 2nd Vice President, Amy Trunnell returning as Treasurer, and Andy Fisk as Secretary.

We have been fortunate over KLT's history to have many wonderful properties donated to us, including two in the last year. The first is Gannett Woods, a spectacular 120-acre parcel on the border of Manchester and Readfield with over a



*Gannett Woods Annual Meeting Field Trip
Photograph: Jym St. Pierre*

Welcome New Members

Diane Anderson
Peter Barotz
N. Warren & Christine Bartlett
Ellen Beals
Bruce & Kathleen Beatty
Mary Duke Blouin
Dana Boas
Veronica Boucher
Leon & Mary Bayer Bresloff
Richard & Virginia Burrill
John R. Clark
Stephen & Laurel Coleman
Thomas & Wendy Danielson
Dale Demers
Dana Devos
Clifton & Jean Fletcher

Elaine Gershman
Greg & Madeline Heikkinen
Garry Hinkley
Ernest & Lori Johnson
Joseph & Vicki Kozak
Paul Lariviere
Carol Mansfield & Andy Smith
Reed & Priscilla Markley
Mary Ellen Martinelli
Michele Mattioli
Jane McWilliams
John & Molly Melrose
Lori Miller
Harold & Clara Moore
Joseph & Martha Nielsen
Eric & Heather Nisch

William & Carol Pond
Peter & Sandra Prescott
Arthur Roy
Robert & Aloha Russ
Jeffrey & Mary Ann Simoneau
Elaine Somerville
Tony Sousa
Constance Spellman
Paul & Julie Stanley
Dorothea Thacher
Derrick & Wendy Tooth
Robert Tucker
*Unitarian Universalist
Community Church of Augusta*
Dave & Ava Walsh
Diane Williams

Save The Dates

2006 Kennebec Land Trust Lyceum The Geology of KLT Lands and Stone Walls

March 16th and 23rd Lectures/Spring and Summer Field Trips

*Co-sponsored by the Vaughan Homestead Foundation
Supported by Robert, Gloria and Lincoln Ladd*

KLT Winter Calendar of Events

- Jan 21** **Annual Workshop for KLT Stewards**
Guest speaker - Chris Mattrick, Botanist, White Mountain National Forest
9:30 - noon ~ Helen and George Ladd Home, Wayne
- Feb 12** **Winter in the Woods** - Readfield Town Forest & KLT's Macdonald Conservation Area
Annual Fun in the Winter Program. Sponsored by the
Readfield Conservation Commission & KLT ~ 12:00 - 3:00 pm
- March 12** **Art Opening KLT Landscape Painting Show** - Slate's Restaurant, Hallowell
6-8 pm ~ Plein Air Paintings; Sturtevant Farm, Vaughan Woods & Gott Pasture Preserve
- March 16** **Lyceum** - Geology of KLT Lands and the Kennebec County Region
Robert Marvinney, Maine State Geologist and KLT Board Member
- March 23** **Lyceum** Program - Stone Walls in Maine
Robert Thorson, Professor of Geology, University of Connecticut &
author, *Stone by Stone, Exploring Stone Walls & Stone Wall Secrets*

Lyceum programs: Ladd Recreation Center, Gott Road, Wayne 7:00 - 8:30 pm



THE KENNEBEC LAND TRUST

PO Box 261, Winthrop, ME 04364

NON-PROFIT ORG
U.S. POSTAGE

PAID

PERMIT #66
WINTHROP, ME

For additional details and information about the KLT call our office at 377-2848
or check our website at www.tkl.org

