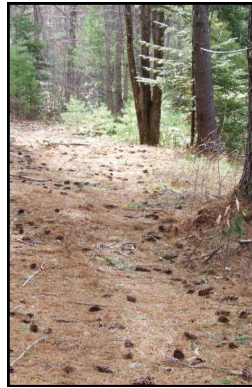


## KLT'S WOODLAND CONSERVATION PROGRAM

The Kennebec Land Trust conserves special places in Central Maine including working forestlands. In addition to practicing forest management with a long-term view, we also host forestry education programs; we promote the stewardship of privately held forestland; and we lead the Local Wood WORKS partnership to encourage the use of sustainable, local wood products. Visit [www.localwoodworks.org](http://www.localwoodworks.org) to learn more.



*Photograph: Emily Perkins*



*Photo: Phoebe Parker*

### Thank you!

The Miller Family, KLT members, Andy Walsh, Peter Miller Woodland volunteer steward; Marc Loïselle, Steve McLaughlin, John Archard, Dwain Young, KLT 2013 summer interns: Hannah Caswell, Lauren Dryburgh and Rich Nagle; Matt Silverman, Jane Davis, Emily Perkins, Bob Mohlar, Howard Lake, Jim Connors, Mike Levey, Levey, Wagley and Putman; Dodi Thompson, and stewardship volunteers.

## ABOUT THE KENNEBEC LAND TRUST

Founded in 1988, The **Kennebec Land Trust** (KLT) works cooperatively with landowners and communities to conserve the forests, lakes, streams, wetlands, fields, and wildlife that help define central Maine. KLT protects and stewards land permanently, offers access to conserved properties, provides opportunities for people to learn about and enjoy the natural world, and works with partners to support sustainable forestry and farming. Our properties feature more than 50 miles of trails for everyone.

Your donations support land conservation, hiking trails, nature education programs, and sustainable forestry and farming!



*KLT Outing Club, Photo: Marc Loïselle*

**A full list of KLT properties can be found at our website:**  
[www.tklt.org](http://www.tklt.org)

**Please support KLT!**

**KLT~PO BOX 261; 331 Main Street;  
Winthrop, Maine 04364  
207-377-2848**

## KENNEBEC LAND TRUST PETER MILLER WOODLAND

60 Acres

Vienna, Maine



*Photograph: Jane Davis*

## YOUR COMMUNITY LAND TRUST





## CONSERVATION HISTORY

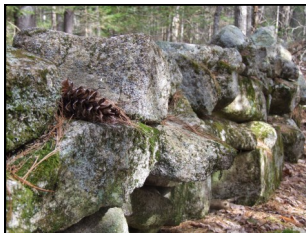


Photograph: Norm Rodrigue

In March 2013, a decade after Ellen and Robert Miller donated KLT's Flying Pond Farm conservation easement, Robin, Holly, and Lynette Miller conserved a second property in Vienna, the Peter Miller Woodland.

This permanently conserved forestland with white pine, eastern hemlock, red spruce, balsam fir, red maple, brown and white ash, and white and yellow birch includes stone walls, woods roads and two small ponds.

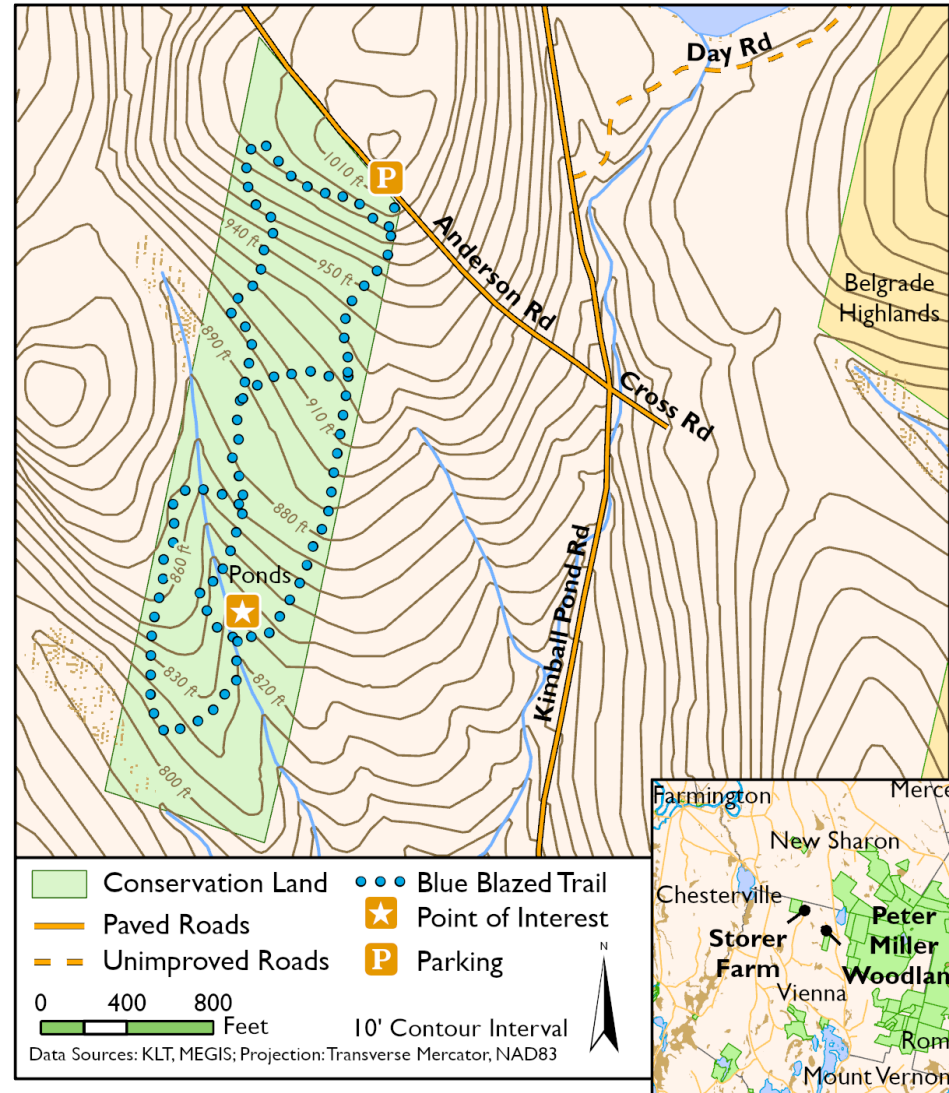
Robin, Holly, and Lynette's gift honors the former owner, their brother, Peter Miller. In the winter of 2009, Peter died of injuries sustained in a wood-cutting accident.



Photograph: Emily Perkins

KLT is honored to conserve this special place for the land itself, for wildlife, and for the people who will enjoy it.

## Peter Miller Woodland, Vienna



KLT's 60-acre Peter Miller Woodland protects important wildlife habitat and wetlands, and will be used for outdoor recreation and nature and conservation education programs.

**Allowable uses:** hiking, nature observation, cross-country skiing, snowshoeing, hunting in season. No motorized vehicles. Dogs are allowed on a leash or under voice command. Please clean up after your pets.

**Access:** Two trails, accessed from Anderson Ridge Road, travels through various stages of woodland growth, leads to small man-made ponds, and includes an old logging road. **Directions:** From Readfield, take Rt 41 North for 11 miles, turn right onto Kimball Pond Road and follow for 2.6 miles, turn left onto Anderson Road (across from Cross Road). Property is on the left, park on the side of the road. Please respect our neighbors and KLT property.