



CELEBRATING 35 YEARS OF LAND CONSERVATION JULY DEDICATION - REYNOLDS FOREST ADDITION

Theresa Kerchner, Executive Director

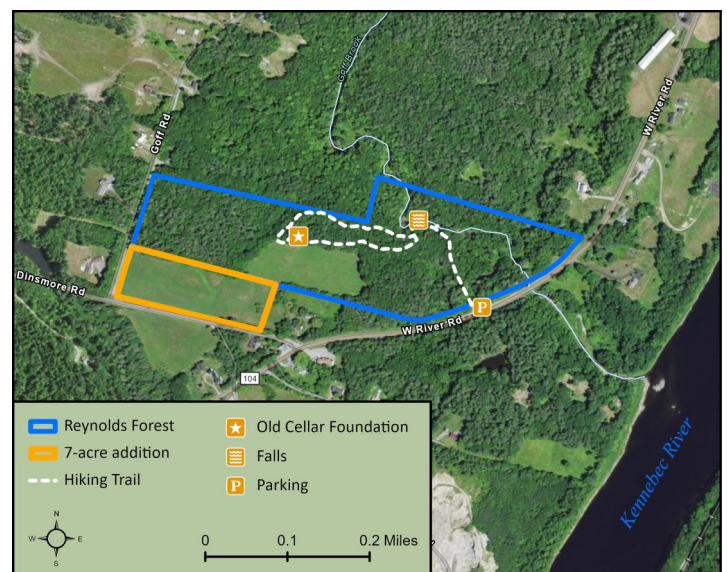
Over the past 35 years, the Kennebec Land Trust (KLT) has been focused on meeting with landowners to discuss conservation options, building trails, conducting ecological assessments, offering public programs, and monitoring our 7,600 acres of publicly accessible conservation land. As we celebrate our 35th anniversary year, we have so much to be proud of! We hope you can join us on July 19 when we recognize our most recent generous land donor.

Bea Reynolds of Sidney, Maine, donated the beautiful 35-acre Walter W. and Alice B. Reynolds Forest on the River Road to KLT in 2004. This permanently protected conservation property features woodlands, beautiful stream frontage along Goff (Marsh) Brook, excellent birding, and productive hayfields. The two trails on the property wind past scenic views of floodplain habitat, impressive waterfalls, hayfields, and an old cellar hole. We manage this land to protect wildlife habitat and water quality, as well as for low-impact outdoor recreation, including nature observation, hiking, and fishing.

The Board of Directors is pleased to announce that KLT has added another seven acres of field habitat on the Goff and Dinsmore Roads to the Reynolds Forest. This valuable property, donated by former Sidney resident Leann Diehl, will enhance the conservation values of the contiguous Reynolds Forest. The Diehl addition will be hayed by a Sidney dairy farmer along with the adjacent KLT field.

At the time of her gift, Leann Diehl noted: *As soon as the Kennebec Land Trust secured the Reynolds Forest, I knew I wanted to add my adjacent seven-acre open land to the preserve. The Reynolds Forest brought our family much joy. We are extremely grateful to KLT for its efforts to keep wild places wild, and we hope visitors will enjoy exploring this new addition to Reynolds Forest.*

A property dedication will be held on July 19, 2023, from 5:30 to 6:30 p.m. at the Reynolds Forest. Please join us for a hike and the opportunity to thank Leann Diehl for her conservation vision and generosity. We hope to see you!



Board of Directors

Janet Sawyer
President
 Matt Mullen
1st Vice President
 Paul Kuehnert
2nd Vice President
 Amy Trunnell
Treasurer
 Bob Marvinney
Secretary
 Kim Vandermeulen
Immediate Past President
 Jordan Beall
 Sue Bell
 Susan Caldwell
 Mary Denison
 Tom Ferrero
 Marty Keniston
 Howard Lake
 Scott Moucka
 Jean Scudder
 Deb Sewall
 Mary Sheridan

Staff

Baylee Bachelder
 Operations &
 Volunteer Manager

Tyler Keniston
 Stewardship Manager

Theresa Kerchner
 Executive Director

Marie Ring
 Membership &
 Program Director

Jean-Luc Theriault
 Stewardship Director

KLT News Design
 Marie Ring

KLT News Editors
 Theresa Kerchner
 Janie Matrisciano
 Deb Sewall

Cover Photo
 Phil Downes

President's Message: Thank You Volunteers

Happy summer to you! As I write this, spring is shifting into summer. I'm looking forward to exploring KLT trails on warm days, and I hope you find time to enjoy the outdoors and beautiful KLT lands as well.

Recently I've seen longtime friends whom I haven't seen for quite a while. At two events, both of which happened to be connected to KLT, my friends asked, "So, what have you been doing with your time?" Part of my response was that I've been volunteering for KLT. As a board member and land steward, I'm honored and delighted to volunteer for this organization. I believe strongly in our mission, and it is my joy to help us flourish in whatever way I can.

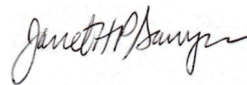
As I reflect on my two-year term as president, what is most prominent in my mind is the teamwork that forms the basis of so many of our accomplishments. I've been privileged to play a role in the acquisition of the 134-acre Oak Hill Conservation Area, the development and implementation of a policy review schedule, and the preparation of our application to renew our accreditation with the Land Trust Alliance. The commitment of so many volunteers and staff has made these milestones possible.

KLT has an excellent professional staff. They truly run the organization. They are thoughtful, well organized, committed, smart, and energetic. And, they could not accomplish all that they do without the many volunteers who are also dedicated to KLT. Volunteers are essential in much of what KLT accomplishes. The opportunities and ways to help are many: building and maintaining trails, assisting with mailings, keeping our kiosks filled with brochures, serving on a committee or the Board of Directors, asking friends to join KLT. Even being a member is a form of volunteering. I want to thank our dozens of volunteers for their time, commitment, willingness, and dedication. Your many contributions help this organization thrive.

If you're not yet volunteering beyond being a member, would you consider it? What tasks do you most like to do? What might you like to learn more about? Do you have a friend or family member you'd like to volunteer with? Think of the possibilities! Let us know about your interest and willingness.

Next time you enjoy a KLT trail that's clear of branches, thank a volunteer. When you see branches along a trail, toss them aside. The next hikers will thank you!

Sincerely,



Janet Sawyer, President

**Advisory Board**

Jim Connors
 Hon. Kenneth Curtis
 Elizabeth Davidson
 Eric Doucette
 Caroline Farr
 David Gibson
 Glenn Hodgkins
 Charlie Jacobs
 Mark Johnston

Ron Joseph
 Kevin Kane
 Martha Kent
 Robert Kimber
 Gloria Williams Ladd
 Ken Laustsen
 Barbara Libby
 Andy Lilienthal
 Scott Longfellow
 Jon Lund

Jessie & Douglas Macdonald
 Bob Mohlar
 Patricia Mooney, Ph.D.
 Jeff Pidot
 Dave Rocque
 Norm Rodrigue
 Reade & Joan Ryan
 Rebecca Stanley
 Jym St. Pierre
 Bob Weston

Welcome to Our 2023 Summer Interns

Our 2023 interns will be supporting Jean-Luc and Tyler and the stewardship program, writing a grant proposal with Marie, learning about office operations with Baylee, and conducting a research project with Jean Luc, Tyler, and Theresa.



Ethan Ross

I'm a rising senior at St. Olaf College in Minnesota, majoring in Environmental Studies with an emphasis in the natural sciences. I grew up in Lyme, New Hampshire, spending and enjoying my time in nature. Outside of school, you can find me mountain biking, hiking, or fishing during the summer, and skiing on the alpine team at St. Olaf in the winter. Conservation has always been an interest of mine, and I'm thankful for this opportunity to learn more about it. I look forward to working with the Kennebec Land Trust and being part of their operations this summer, as well as getting to know Maine better!

Tucker Schultze

I'm a rising senior at St. Olaf College in the beautiful state of Minnesota, with majors in Environmental Studies and Political Science and a minor in Management. Many of my courses have focused on environmental policy and human interaction with the environment. The place I consider home is Ohio, but I went to high school in Singapore and I've spent a great deal of time in Maine, close to Kennebec Land Trust's properties. This part of the state has been crucial in developing my passion for the outdoors and my appreciation of the beauty of nature. In my free time I enjoy hiking, kayaking, skiing, and playing soccer. Last summer I interned with the National Park Service in Community Engagement for Cuyahoga Valley National Park. I look forward to continuing this work with the Kennebec Land Trust - using environmental education to help the public connect to the beautiful natural spaces around them.



2023 Board Transitions



Welcome Scott Moucka, Board Member

Scott lives in Augusta with his wife, Rita, and their dog. He studied geography, cartography, and GIS at the University of Wisconsin-Madison and now works as a software engineer. Scott enjoys nearly all outdoor activities, especially trail running and exploring Maine by bike. He counts the days to ice out on our lakes for paddling season just as eagerly as he does the first snow for winter activities.

Welcome New Members!

Mary Ellen Amerighi
Anonymous
Luke Beeson
Paul D. Berkner
David Brouillette
Amanda Carlsen
Randy D. Carlsen
James Carson
Karen Carson
Jeff Caverly

Cindy Caverly
Eric Covert
Jacquelyn & Allen Cressy
Alyson Cummings
Mark J. Deden
Tom Falls
Dale Farrar
Joanna Martinson Jacobs
Gene & Carlene Kaler
David & Rebecca Lenz

Kelly Lucas
Aaron Martin
William & Sally McKeagney
J. Philip Miller
Roy & Lisa Miller
Scott Moucka
Rob O'Dwyer
Michael Wesley Padula
Janet Doreen Paxton
Kelley Perreault

Stephen Plate
Joe & Lisa Silva
Dana & Nancy Smith
Richard Sutton
Pat Taylor
Stephanie E. Trapnell
Danielle Wain
Pamela Wallace
Aerin Willey
James Wilson

35th Anniversary Trail Challenge

Marie Ring, Director of Membership & Programming

Save the dates! Help us celebrate the Kennebec Land Trust's 35th anniversary this summer by participating in a community trail challenge. Between July 1, 2023, and August 13, 2023, community members and guests will be encouraged to get outside and explore the area by hiking, walking, running, biking, swimming, and paddling.

There will be no cost to participate, but every mile completed and logged by trail users will result in the donation of a dollar for adults and five dollars for children 13 and under from fund donated by local businesses in support of local trail stewardship. All the money raised will be used for the stewardship of KLT's existing 57 miles of trails, including those at the Mount Pisgah Conservation Area, and the development of new trails in KLT's service area.

For each week of the challenge, participants who log their miles will be entered into a drawing with a chance to win prizes from local sponsoring businesses. Participants will be invited to a celebration at KLT's Annual Meeting on August 20, 2023.

KLT's goal is for participants to log 10,000+ miles or the equivalent of \$10,000 toward area trails. Stay tuned for more information about this exciting way to celebrate our anniversary.



Celebration & Memorial Gifts

In Honor of Janet Adelberg

Rachel J. Frew

In Honor of Carol & Ellerbe Cole

Andrew & Amy Cole

In Memory of David J. Crandall

Marilyn C. Jones

In Memory of Elizabeth J. Crandall

Charles Crandall & Marian McGuire

In Honor of Elizabeth Davidson

Steve & Mary Fromyer

In Honor of Pamela Jane Fleet

Deborah P. Sanders

In Memory of Emily Perkins Harrison

Barbara Libby

Dee & Harry Richardson

In Honor of Barbara Libby

Bill & Carole Slayton

In Memory of Mort Libby

Jeremiah Gordon

In Honor of Teague Morris &

Dusty Small

Ripley B. Morris

In Memory of Jo Wagner

Brian Staubach

In Memory of Judith Anderson Walsh

Denyse & Stewart C. Anderson

In Memory of Kitty Wheeler

Stephen & Deirdra Moriarty

Tribute donations are from September 20, 2022 - May 11, 2023

Conserving Land For Future Generations

MJ, Scott, and Dick Wagner; Jo Wagner's daughter, son, and husband



Jo & Dick Wagner

Jo and Dick Wagner came to Maine as newlyweds in 1956, when Dick was stationed at the Brunswick Naval Air Station. They already had ties to Maine from family trips, and they knew that this was where they wanted to build a future together. They settled in Manchester in 1960 when Dick got a job at CMP after his stint in the Navy.

One of the things Jo loved best about Maine was its beautiful and diverse undeveloped landscapes. She and Dick made sure the whole family got outdoors as much as possible to enjoy their adopted state, making hikes and picnics to local preserves and state parks a regular part of family life.

Over the years, Jo was an enthusiastic supporter of conserving those lands so that future generations could enjoy them as much as she did, as well as protecting fragile ecosystems that were under increasing pressure from development. This focus made her a natural early supporter of the Kennebec Land Trust. She especially loved the fact that KLT is a local organization that concentrates on preserving properties in the area where she and Dick spent more than 60 years exploring, hiking, biking, cross-country skiing, snowshoeing, and building strong connections to the land.

Leaving a legacy gift to KLT was one of Jo's deepest wishes. She knew the good folks at KLT would put her contribution to the best possible use, and she was comforted that her gift would support KLT's mission into the future.

Jo Wagner, 90, passed away peacefully on Tuesday, Aug. 2, 2022, at the Androscoggin Hospice House in Auburn.

Thank you KLT's Major Donors – Conservation Champions

Theresa Kerchner, Executive Director

Congratulations KLT supporters! We are celebrating thirty-five years of land conservation in central Maine this year. As we look forward to the next decade of conservation success stories, our mission continues to be focused on protecting and stewarding valuable lands in our 413,000-acre service area, helping to mitigate climate change, and developing the next generation of leaders.

Our permanently protected lands and fifty-seven miles of trails are available to everyone for hiking, skiing, hunting, seeking solitude, and enjoying and appreciating Maine's waters, wildlife, and flora.

KLT has developed a statewide reputation as an innovative land trust, and we're committed to steadily increasing our contributions to our region's environmental, economic, and community well-being. This success is only possible due to the support of our 1,100 individual, family, and business members and our visionary major donors.

As we continue to grow, we know that our ability to advance our conservation work will depend on the collective impact of membership gifts, as well as on larger contributions from our major donors. Currently we have a number of donors who can commit to contributing significant annual gifts, and some who are planning ahead to remember KLT in their wills. These generous contributions provide a solid foundation for our long-term financial sustainability.

Each of us has a vision for what to contribute during our lifetimes and what to leave as a legacy. We hope you will consider KLT as you think about the future of the place we call home and the land we love.

If you have a traditional IRA and are over the age of 70½, you can make tax-free distributions directly from your account. If you are subject to a Required Minimum Distribution (RMD), now starting at age 72, such a contribution can reduce your taxable income while satisfying your RMD.

The following language can be used in your will: I give to Kennebec Land Trust, a nonprofit land conservation trust located in Winthrop, Maine, with Tax ID Number 01-044-0729, the sum of \$_____ [or _____ percent of my estate] to be used for the general purposes of the Kennebec Land Trust.

For more information, please contact me at 207-377-2848 or tkerchner@tklt.org to arrange an in-person, phone, or virtual meeting.



Maine's State Parks and Public Lands - 2023 Lyceum

Marie Ring, Director of Membership & Programming

This year we had the pleasure of learning about Maine's state parks and public lands from five guest speakers from the Maine Bureau of Parks and Lands (BPL), the Maine Natural Areas Program (MNAP), and the Maine Department of Inland Fisheries and Wildlife (MDIFW).

The first lecture featured Jocelyn Hubbell, BPL Interpretive Specialist, and Rex Turner, BPL Outdoor Recreation Planner. Jocelyn and Rex explored the benefits and values that people place on Maine's lands, which are as varied as the people who visit them. The lands contribute to people's mental and physical health, Maine's economy, the conservation of wildlife habitat, and more. BPL continues to explore strategies to make sure that more people can enjoy the benefits of Maine's state parks and public lands.



Deboullie public lands

BPL

In the second lecture, Justin Schlawin, Forest Ecologist at MNAP, and Sarah Spencer, Senior Resource Biologist at MDIFW, focused on the biodiversity of Maine's lands. Maine has over 35,000 species across many different habitats. BPL lands include most of these habitats and more than 40% of the state's rare, threatened, and endangered (RTE) flora species and 50% of the state's RTE fauna species. Wildlife habitat management is an important goal of these three organizations.

BPL Deputy Director Bill Patterson closed out the lecture series with an informative presentation about BPL's plans for the future. He emphasized the importance of partnerships, both for funding future projects and for coping with the challenges of organizational capacity. One of the most recent BPL acquisitions is the nearby 813-acre Kennebec Highlands addition, which was permanently protected in 2022 in collaboration with 7 Lakes Alliance and Land for Maine's Future.

We all have our favorite state parks and public lands, but as I listened to our guest speakers, I was reminded just how diverse Maine's public lands are and how many I have yet to experience. Maine's state parks and public lands are wonderful resources for Maine residents and visitors, and I hope everyone will find opportunities to explore them.

Thank you to our speakers, and to our generous lyceum supporter, Gloria Williams Ladd, for making this year's lyceum possible. Thanks as well to Winthrop High School for hosting us.

KLT Applies for Reaccreditation with the Land Trust Accreditation Commission

Theresa Kerchner, Executive Director



The Land Trust Accreditation Commission is a program that promotes national standards for ensuring permanence in the conservation of important natural places and working lands. In August 2018 it announced that KLT had achieved first-time accreditation.

The commission, an independent program of the Land Trust Alliance, conducts an extensive review of each land trust applicant's policies and programs. In awarding KLT accreditation, the commission signified its confidence that KLT's lands will be protected forever. Accreditation also underscored KLT's continued commitment to honoring the intent of our land donors while also providing public access to beautiful conservation woodlands, lakes, and streams. Five years later, KLT is seeking reaccreditation.

You may be wondering why we devote so much time to this process. National accreditation is a method of standardizing land trust procedures, and for us the process offers a valuable means of self-assessment. As we continue to grow, are we keeping our house in order? Are our stewardship, financial, and legal records current and appropriate? Do we have updated policies in place?

President Janet Sawyer, Immediate Past President Kim Vandermeulen, and KLT staff members completed the rigorous accreditation application in March. As part of this process, we provided extensive documentation to the Accreditation Commission and are now subject to a comprehensive third-party evaluation prior to achieving reaccreditation. Stayed tuned for our fall update, and please contact me if you have questions about the accreditation program.

Thank You Foundations & Funds

Donald & Martha Kent Fund
Douglas & Jessie Macdonald Gift Fund
Elmina B. Sewall Foundation
Farnsworth Fund of the
Essex Community Foundation
Farr Harvey Fund
Fields Pond Foundation
Helen & George Ladd
Charitable Corporation
John C. Orestis & Barbra M. Crowley Fund
of the Maine Community Foundation
Kennebec Savings Bank

Maine Coast Heritage Trust
Maine Community Foundation
Margaret Burnham Charitable Trust
McGehee-Sniffen Fund
Max Davis Giving Fund
Onion Foundation
Silverseed Fund of the
Maine Community Foundation
The Snider Foundation

*This list includes foundations and donor-advised funds
that have given \$1,000 or more to KLT from
January 1, 2022 - May 11, 2023*

Please Support Our Business Partners

The businesses listed below are generous annual supporters of KLT and its mission.

Conservation Leader

Alternative Manufacturing Inc. (AMI)
Amy P. Trunnell, CPA
Augusta Fuel Co.
Big White Barn
Camp Androscoggin
Camp Laurel
Camp Winnebago
Camp Vega
EP Wealth Advisors
Everett J. Prescott Inc.
(Team EJP Employees)
Farris Law
G & E Roofing
Kennebec Cabin Company
Kennebec Savings Bank
Lake and Denison Attorneys
Longfellow's Greenhouses
LPK
Maine Evergreen Hotel
Northcenter Performance Food Group
Sprague & Curtis Real Estate
Two Trees Forestry
Winthrop Veterinary Hospital

J.S. McCarthy Printers
Levey, Wagley, Putman, & Eccher, PA,
Attorneys at Law
McKee Law
Old Port Advisors
One River CPAs
van der Brew

Trail Blazer

Asset Real Estate Management
Harvest Time Natural Foods
Macomber, Farr & Whitten
North Country Rivers
O&P Glass

Business Partner

Blanchard Cabinetmakers
Camp Runoia
Creative Conservation, LLC
D. R. Struck Landscape Nursery
Kennebec Valley Chamber of Commerce
Maine State Credit Union
Peter L. Mendall Certified Financial Planner
(CFP®)
Readmont Lumber
Stantec Consulting
Thomas Agency
Winthrop Lakes Region Chamber of
Commerce
Winthrop Fuel Company

Kennebec County Champion

A Lakeside Studio Pottery
Beth Jones Yoga
Family First Funeral Homes
Fieldstone Gardens
J F Scott Construction Company

Thank You Volunteers

Sarah Adelberg, Jane Andrews, Jamie Ault,
Harold Burnett, Susan Caldwell,
Camp Mechuwana, Central Maine Power,
Cheri Cooledge, Jim Connors,
Dave Courtemanch, Deb Crowley,
Andy Cutko, Steven Dascoulias &
Winthrop High School, Julie Davenport,
Elizabeth Davidson, Jane Davis,
Mary Denison, Eric Doucette, Phil Downes,
Jocelyn Hubbell, Amy Hughes, Jill Ippoliti,
Kevin & Mary Kane, Lloyd Irland,
Brenda & Howard Lake, Ed Lake,
Ken Laustsen, Maine Forest Service,
Bob Marvinney, Janie Matrisciano,
Tom Matthews, Cathy McCue, Teague Morris,
Anabeth Murphy, Shearon & Kyle Murphy,
Mike & Rene Padula, Bill Patterson,
Jim Perkins, Chris Riley &
Central Maine NEMBA, Joyce Rivers,
Dave Rocque, Norm Rodrigue,
Janet & Ansley Sawyer, Justin Schlawn,
Jean Scudder, Deb & Syd Sewall,
Andy Shultz & Maine Tree Farm, Dusty Small,
Sarah Spencer, Ellen Taylor,
Pat & Brian Taylor, Jeff & Karen Toothaker,
Amy Trunnell, Rex Turner,
Kim Vandermeulen, Vaughan Woods &
Historic Homestead, & **KLT Land Donors,
Stewards, Office & Field Volunteers,
Directors, & Advisors.**



Jamie Ault planting KLT's office gardens

**KLT
NEWSLETTER
SPONSOR**





P.O. Box 261
331 Main Street
Winthrop, ME 04364

Phone: 207-377-2848
info@tklt.org
www.tklt.org



Printed on 30% post-consumer
recycled paper



2019 Meeting at Camp Androscoggin

Andy Tolman



Male Bobolink

Laura Suomi-Lecker

**35th Anniversary Celebration
and Annual Meeting
Sunday, August 20, 2023
Camp Androscoggin, Wayne**

**Lyceum Field Workshops
Habitat Management for Grassland
Birds and Pollinators
Thursday, September 21**

**History Walk at Rosmarin & Saunders
Family Forest and Macdonald Woods
Saturday, October 14**