

Kennebec Land Trust

35th Anniversary Report



1988-2023

Table of Contents

Welcome Letter	3
Board, Advisors, and Staff	4
Past Presidents and Land Trust Incorporators	5
KLT Milestones.....	6
Reflections on 35 Years: An Interview with Deb Sewall.....	7
Internship Program.....	10
Baldwin Hill Conservation Cemetery	12
Lyceum Lecture Series	13
Property Stewards	14
35th Anniversary Trail Challenge	16
Past Annual Meeting Awards Recipients	17
Property Listings by Town	18
Property Box Quotes	23
Service Area Map.....	24
National Land Trust Accreditation	26
Local Wood WORKS.....	27
Sustainable Forestry Education Program.....	28
Legacy Society and Conservation Leaders	29
Foundation Support and Municipal Members	30
Business and Community Partners	31
KLT Publications	32
2023 Annual Meeting	33
Financial Report	34
KLT Staff	36



October, 2023

Dear KLT Members,

On a beautiful late August day over eighty members gathered at Camp Androscoggin to celebrate thirty-five years of land conservation in central Maine. Together we enjoyed hiking in KLT's Perkins Woods, swimming in Camp Androscoggin, picnicking while enjoying the lively music of the Sandy River Ramblers, visiting with new and old friends, and celebrating our many past and recent accomplishments.

The annual meeting anniversary slide show highlighted KLT's impressive history - to date we have protected nearly 7,700 acres and constructed 58 miles of trails for everyone to enjoy. These permanently protected lands and trails are available for hiking, skiing, hunting, seeking solitude, and enjoying and appreciating Maine's waters, wildlife, and flora.

During the annual meeting, we watched an incredibly inspiring video, a project of our 2023 summer interns, Ethan Ross and Tucker Schulze, produced by volunteer videographer Tim Long. The video focused on KLT's work to seek avenues to connect people from all walks of life to nature and to develop partnerships that will provide tangible outcomes for those who may face barriers to enjoying the outdoors. The video also underscored our commitment to inclusion and our understanding of and appreciation for the physical and mental health benefits of experiencing time in the natural world.

Each of the annual meeting reports by directors and staff highlighted our commitment to land conservation and stewardship, sound governance, and financial sustainability. We are grateful every day for your continued support and for the beauty of the natural world around us.



A handwritten signature in black ink, appearing to read 'Matt Mullen'.

Matt Mullen, President



A handwritten signature in black ink, appearing to read 'Theresa Kerchner'.

Theresa Kerchner, Executive Director

2023 - 2024

Board of Directors

Matt Mullen, *Augusta* (P)
Paul Kuehnert, *Hallowell* (1st VP)
Scott Moucka, *Augusta* (2nd VP)
Amy Trunnell, *Readfield* (T)
Bob Marvinney, *Readfield* (S)
Jordan Beall, *Farmingdale*
Sue Bell, *Hallowell*
Susan Caldwell, *West Gardiner*
Mary Denison, *Readfield*
Tom Ferrero, *Vienna*
Marty Keniston, *Readfield*
Howard Lake, *Readfield*
Scott Moucka, *Augusta*
Janet Sawyer, *Augusta*
Jean Scudder, *Readfield*
Deb Sewall, *Hallowell*
Mary Sheridan, *Wayne*
Kim Vandermeulen, *Wayne*

Advisory Board

Jim Connors
Hon. Kenneth Curtis
Elizabeth Davidson
Eric Doucette
Caroline Farr
David Gibson
Glenn Hodgkins
Charlie Jacobs
Mark Johnston
Ron Joseph
Kevin Kane
Martha Kent
Robert Kimber
Gloria Williams Ladd
Ken Laustsen
Barbara Libby
Andy Lilienthal
Scott Longfellow
Jon Lund
Jessie & Douglas Macdonald
Bob Mohlar
Patricia Mooney, Ph.D.
Jeff Pidot
Dee & Harry Richardson
Norm Rodrigue
Reade & Joan Ryan
Rebecca Stanley
Jym St. Pierre
Bob Weston

Staff

Baylee Bachelder
Tyler Keniston
Theresa Kerchner
Marie Ring
Jean-Luc Theriault
Victoria Vandervort

2023 Summer Interns

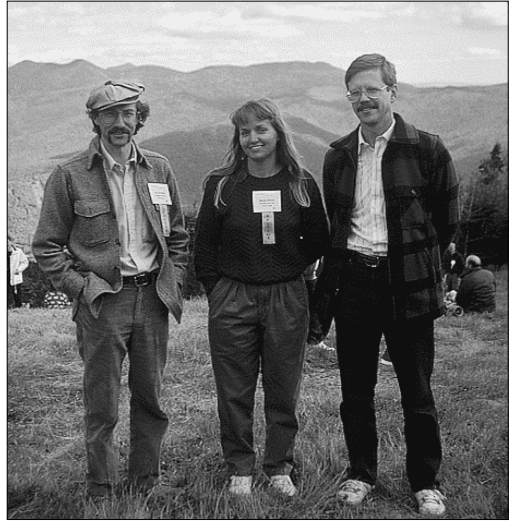
Ethan Ross
Tucker Schulze



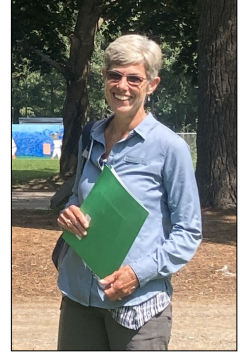
Tucker, Ethan, Jean-Luc, Tyler, Theresa, Marie & Baylee

KLT Presidents

Jym A. St. Pierre	1988-'91
Wendy Dennis	1991-'93
Howard Lake	1993-'95
Norm Rodrigue	1995-'97
Jeff Pidot	1997-'99
Jim Connors	1999-'01
Andy Fisk	2001-'03
Glenn Hodgkins	2003-'05
Deb Sewall	2005-'07
Bob Marvinney	2007-'09
Cheryl Harrington	2009-'11
Stan Eller	2011-'13
Brian Kent	2013-'15
Mary Denison	2015-'18
Kim Vandermeulen	2018-'21
Janet Sawyer	2021-'23
Matt Mullen	2023-



*Jym St. Pierre, Wendy Dennis, & Howard Lake
at the 1991 Land Trust Rally in
Waterville Valley, New Hampshire*



*From left: Bob Marvinney - 2009 Annual Meeting
Mary Denison - 2017 Annual Meeting, Photo: © Jym St. Pierre
Janet Sawyer - 2023 Annual Meeting, Photo: Marie Ring*

Land Trust Incorporators, 1988

Jym St. Pierre	Harold Blake	Wilbur Foss
Howard Lake	Wendy Dennis	Sen. Charles Dow
Jerry Bley	Aaron Whitcomb	Rep. Omar Norton
John St. Andre	Bob Mohlar	Lloyd Irland
Ken Spalding	Lloyd Brace	Holly Dominie
Claudia Sait	Mark Ishkanian	John Daggett
Allan Toubman	Norman Erickson	

KLT Milestones

35th Anniversary: KLT applies for reaccreditation from the Land Trust Alliance Accreditation Commission. 7,690 acres conserved with 58 miles of trails. KLT interns work with KLT staff, community members, and city officials on a trail accessibility feasibility study for Howard Hill Historical Park in Augusta and Effie L. Berry Conservation Area in Hallowell.

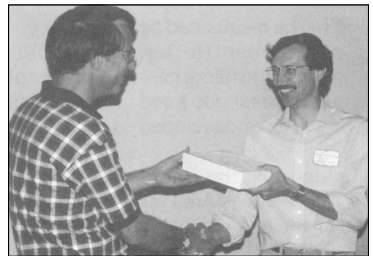
At 30 Years: KLT interns and volunteers work with the City of Augusta to clear invasives and build trails on Howard Hill. KLT receives accreditation from the Land Trust Alliance Accreditation Commission. 6,200 acres conserved!

At 25 Years: KLT purchases and moves to our current building at **331 Main Street in Winthrop**. Our new building has staff offices, a conference room, and parking for visitors. KLT made energy efficiency updates, including installing a wood pellet boiler. This move was made possible by generous donor support and the many volunteers who helped us move and who continue to help us maintain the building and grounds.

At 20 Years: KLT hosts the **Abigail Holman Farmland Conservation and Education Program**. Schoolchildren in Fayette, Mt. Vernon, Vienna, Manchester, Readfield, and Wayne interviewed farmers and visited local farms to learn about the importance of conserving farmland.

At 15 years: KLT holds its first **annual stewardship training**. Every year we invite our volunteer stewards (currently 70 individuals) to hear a natural resources speaker and share updates on their properties. For many years, Gloria and Lincoln Ladd have generously hosted our group for a brunch. Our first stewardship workshop was hosted at one of our conservation easement properties, Camp Bearnstow, on Echo Lake in Mount Vernon. Tin Smith from the Wells Reserve was the inaugural speaker.

At 10 years: : The infamous **ice storm of '98** batters Maine, and the KLT community and our properties are no exception. Many residents lost power for days. Our forests took a hard hit, and the stewardship committee was very busy at KLT properties, including Vaughan Woods and Wyman Memorial Forest. Maine's forests still show signs of this storm, and forestry researchers have taken a close look at the impact of this disturbance and subsequent forest succession.



*Jeff Pidot congratulates Jym St. Pierre
on completing his service as a
KLT Director*

At 5 years: KLT completes its first major fundraising campaign. The organization reaches its goal of raising \$42,000 to purchase **Sheep (Perry) Island** on Cobbossee Lake.

In 1988: Concerned community members and local municipalities meet to address planning and growth issues in Kennebec County. KLT is incorporated on November 4.

Reflections on Thirty-Five Years

*Board Member **Deb Sewall** has served on the board since 2000. She was secretary from 2003 to 2005, 2009 to 2010, and 2018 to 2019, and president from 2005 to 2007, and she continues to dedicate her time and energy to KLT by serving as a board member and volunteer. Marie recently interviewed her about KLT.*

MR: When and how did you first get involved with KLT?



Deb Sewall, 2005

DS: I don't think I have a year, but it was in the 90s or early 2000s. Jeff Pidot [KLT board member] lived next door to me. He called and said he was on the board of this organization called Kennebec Land Trust and they were looking for a board member. He said the board was the nicest group of people, and he thought I would be a good fit.

I agreed because I walked in Vaughan Woods every day, and being on the board would be a way to help. And Jeff was right about how nice the people were, although they all knew much more about land conservation than I did. I saw it as a way to learn something new and meet new people.

MR: What did the organization look like then?

DS: At that time, there was no executive director, no staff at all. All the work was done by the board and volunteers. The land trust incorporators had figured out that the area needed a land trust due to development pressures. They were talking to landowners about conservation and figuring out what tools were available. It was all done at a kitchen table like this.

MR: What changes and growth have you seen during your time with KLT?

DS: There have been huge changes and growth, but the same philosophy, goals, and mission. The board used to do everything, and then we finally decided we needed a stewardship director, so we hired Theresa Kerchner. Theresa came with natural history knowledge, and thanks to her efforts, community interest in conservation kept growing. As the staff has grown, I was impressed that the founding board was able to let the staff do their job, with the board setting goals and advising. Even though the KLT board has always been remarkably hands-on, and many are volunteer stewards, we were able to focus more on setting priorities and outreach to the community, like a traditional board.



*KLT Board Members Paul Kuehnert
and Deb Sewall at 2021 Annual
Meeting*

Photo: Norm Rodrigue

KLT now has more ability to get a great deal of high-quality work done because of the excellent staff we have attracted. We became more sophisticated as we learned best practices in trust management from the Maine Land Trust Network. Although we did a good job in our early years, we all had other jobs too, so the transition to a professional staff greatly increased the trust's capacity. KLT's reputation has grown as well, and it's nice to see the organization getting a lot of respect in the community. None of this would have been possible without support from our members and a tremendous amount of volunteerism.

MR: Why do you support KLT?

DS: When you get to know an organization from the “ground up,” you bond. It's almost like watching a child develop. Knowing the organization as well as I do, I know that a donation of time or money will be well used and make a difference. I continue to make use of the properties and my family does as well, so there has been a direct benefit. The primary reason is that I believe in the mission of KLT.

MR: What's your favorite KLT memory or story?

DS: We were trying to build a beaver deceiver at the Davidson Nature Preserve and we hired a professional. He came alone and had a wire cutter, chicken wire, a pipe, a rickety canoe, and other things to jerry-rig a cage around the pipe. It was just me, him, and Dibby [Elizabeth Davidson], Dibby was balancing the boat, I was on the shore, and he was up to his armpits in fairly cold water. What could go wrong? In the end we were just a little wet and muddy. You had a retired librarian who had done a little research into beaver behavior, a professor of music and amateur naturalist who was the “ballast,” and the professional who was taking blood thinners as he was recovering from a heart attack. We were in over our heads, and the beavers were a lot smarter than we were.



Bob Kimber, KLT Advisor, Deb Sewall, KLT Director & past President, Elizabeth Davidson, Land Donor & KLT Advisor, Betsy Poulin, Davidson Nature Preserve Steward, Molly Melrose, Vassalboro Wildlife Habitat Steward, Stan Eller, past President, and Theresa Kerchner, at Davidson Nature Preserve

Photo: Ron Joseph

MR: What are KLT's greatest accomplishments?

DS: Land trust work is very tangible. You can drive 10 or 20 minutes from Augusta and get somewhere that's been conserved by KLT. You can see dots on the map that could literally have been leveled. And instead, they're places for plants and wildlife to flourish and people to enjoy nature. That's a great accomplishment.

MR: What are KLT's greatest accomplishments? (continued)

DS: One that comes to mind is one of the latest, the Oak Hill Conservation Area, just because it's more recent. Hearing what the hill meant to him [Ron Hewett] and his family and knowing it will be protected for them and others was so meaningful to all of us who were at the dedication. And then we took a walk on the trail that the interns had built. Each property has a human history behind it along with its natural values.

I love seeing the internship program. Offering an opportunity for young people to learn about conservation, and creating leaders for the next generation, is something KLT is in a perfect position to do. Young people are going to make a difference, and they're fun. I light up when I hear about the interns' research projects. Public access has always been important. The exciting thing about Howard Hill, in addition to the trails and the spectacular view, is that all along Sewall Street there are apartments with kids. I like to imagine that they're out there playing in what probably seems to them to be the deep dark woods. That's an accomplishment we can be proud of.



*Hallowell Conservation Commission
Effie L. Berry Conservation Area Dedication, 2018
Deb Sewall far right
Photo: Kevin Kane*

MR: You mentioned that working with Theresa was one of the highlights of being involved with KLT?

DS: It has been a huge pleasure getting to know and working with Theresa, and we have had many laughs together over many years. She's a force of nature. I have watched her develop positive personal relationships all across our area, which strengthens the organization. Community support makes a big difference. Theresa has a depth of knowledge, and she has natural curiosity, warmth, and respect for other people. She has shared her interest in the natural world on field trips and in educational programs. I have learned a great deal from her.

MR: What's your favorite KLT property?

DS: Vaughan Woods, Pisgah, Parker Pond, Davidson, Webber Rogers, Gott Pasture, I could keep going

Ronald Joseph Internship Program

During their eight-week internship, our hard-working college students tackle an impressive number of projects: trail building and maintenance; invasive species control; educational programming for school-aged children and property visitors; research focused on important conservation topics; writing press releases and grant proposals; and assisting with routine office work. For more information about KLT's summer internship program and to view past intern research projects, visit www.tkl.org/internship.



Ethan Ross and Tucker Schulze

Ethan and Tucker - thank you for your impressive work for KLT this summer!

KLT Interns

<i>Elizabeth (Beth) Shattuck</i>	2004, 2005	Selena Bachelder	2014
<i>Maddy Edwards</i>	2004	Avery Siler	2015
<i>Lauren Kennedy</i>	2004	Simon Pritchard	2015
Andy McLeod	2005, 2006	Josh Caldwell	2016
<i>Daniel Perkins</i>	2005	Toby Smith	2016
Jon Hillier	2006	Jane Tekin	2017
Kali Abel	2006	Anna Hodgkins	2017
<i>Emily Perkins</i>	2008	Drew Perlmutter	2017
Andy McEvoy	2008	Jack Daley	2018
Bryan Prelgovisk	2008, 2009	Jordan Tanguay	2018
Colin Jones	2009	Joe Hazelton	2019
Katie Epstein	2009	Jonah Raether	2019
Sam Whittemore	2009	Grace Andrews	2020
Katie Jennings	2010	Luke Beeson	2020
Nathalie Woolworth	2010	George Edison	2020
Wade Davis	2010	Evan Kuehnert	2020
Aaron Kaplan	2011	Andrew Czwakiel	2021
Amanda Lavigueur	2011	Katherine Ide	2021
Constance Kent	2011	Johnny Robinson	2021
Teresa Withee	2012	Emily Lamb	2022
Veronique Vendette	2012	Naomi Lynch	2022
Hannah Caswell	2013	Ben Peverall	2022
Lauren Dryburgh	2013	Ethan Ross	2023
Rich Nagle	2013	Tucker Schulze	2023

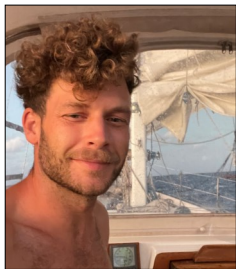
Where are KLT interns now?

We are proud of our past interns and their accomplishments. Many of KLT's interns have gone on to interesting careers in conservation. We heard recently from three former interns: Katie Epstein, 2009; Jordan Tanguay, 2018; and Sam Whittemore, 2009.



Katie Epstein: My internship with KLT initiated what has now been an almost fifteen-year journey through the professional world of conservation. After graduating from Davidson College in 2010, I took a position with the Teton Science Schools in Jackson, Wyoming, teaching environmental education throughout the Greater Yellowstone ecosystem. I moved from Wyoming into graduate school, first at the University of California, Berkeley, and then for a doctorate at Montana State University. In the years that followed, I worked as a human geographer and researcher, studying environmental governance and land ownership in the western United States and Norway. In the summer of 2023, my family and I relocated to Bath, Maine, where I started a position as Director of Conservation Science with The Nature Conservancy-Maine. Fourteen years after my summer as a KLT intern, I am thrilled to find myself back in Maine and to be reconnected with the KLT community.

Jordan Tanguay: A summer with KLT kickstarted my interest in conservation and wild places. After graduating from St. Lawrence University with a focus in land management, I moved to Juneau, Alaska, where I worked at the Southeast Alaska Land Trust to conserve highly valued habitat through compliance monitoring, writing reports, and coordinating land maintenance projects. I recently decided to jump into outdoor education. I now work for Discovery Southeast, a non-profit that introduces children and families to the outdoors through hands-on exploration to foster a lifelong appreciation for the natural world. I am enthusiastic about this work and thankful for the skills I gained while at KLT.



Sam Whittemore: Since the summer of 2009, when I worked with KLT on trail maintenance, invasive honeysuckle control, and property mapping, I've taken a long path back to the intersection of conservation and field work that I so enjoyed in Maine. With an engineering degree, I found field work the easier of the two to incorporate. Past experiences include creating a snow measurement tool for avalanche safety, developing machine controls for utility scale solar in deserts in the western US, and spending five years with SpaceX avionics. I'm grateful that KLT showed me early in my career that it's possible to include values of conservation and an outdoor lifestyle in one's work. Now I'm leading hardware development at Coral Gardeners in Moorea, where I design and deploy underwater computer vision systems to monitor reef health.

Baldwin Hill Conservation Cemetery

The Baldwin Hill Conservation Cemetery (BHCC) makes ecologically sound burial available to people of all faiths and serves as a model of green burial practices in Maine and beyond.

As the KLT developed this initiative, it became apparent to us that conservation burial is traditional burial—a practice that has been followed for thousands of years. The use of chemical embalming fluids and energy-intensive cement vaults is relatively new, and our society is still coming to terms with the environmental impacts of these modern burial practices.

The burial practices employed at Baldwin Hill Cemetery rely on the resiliency of the land and the processes of life and death that contribute to that resilience.

Natural or “green” burial is a way of caring for the dead that minimizes environmental impacts and embraces the biological processes of decomposition at the end of life. Natural burial may be associated with practices that aid in the conservation of natural resources, the reduction of carbon emissions, the protection of worker health, and the restoration and preservation of habitat.

Natural or green burial uses non-toxic, bio-degradable materials for caskets, shrouds, and urns, replacing the embalming fluids, concrete vaults, and elaborate caskets made of synthetic or exotic materials that are used in conventional burials. Conservation burial is a form of natural or green burial, but it has an added element of land conservation.

Baldwin Hill Conservation Cemetery is certified by the Green Burial Council and the Conservation Burial Alliance as a Conservation Cemetery.

For more information about the Baldwin Hill Conservation Cemetery or to purchase interment rights, please visit www.baldwinhillcemetery.org.



Photo: Ron Joseph

March Lyceum Lecture Series

This past March KLT hosted our annual Lyceum lecture series. We welcomed three professionals who shared their knowledge of Maine's state parks and public lands. As continuing parts of the Lyceum, we will be hosting a grassland bird and pollinator habitat workshop in September and a history walk in October.

The KLT winter lectures are modeled after the early New England lyceums that began in 1826 in Massachusetts. For many years New England lyceums hosted lectures, debates, and concerts for public audiences. KLT's March Lyceum and the associated field programs are supported by the Ladd Family.

Our first "lyceum" was not yet called the Lyceum. The Spring 2003 newsletter mentions the "Community Ornithology Series...with an inspiring presentation by Ronald Joseph, wildlife biologist, with the US Fish and Wildlife Service" as well as presentations by Dave Eves, BioDiversity Research Institute and Jim Miller, retired teacher and birdwatcher. Our 15th Lyceum in 2017 brought Ron out of retirement to present on "Maine Birds and their Habitats" once again.

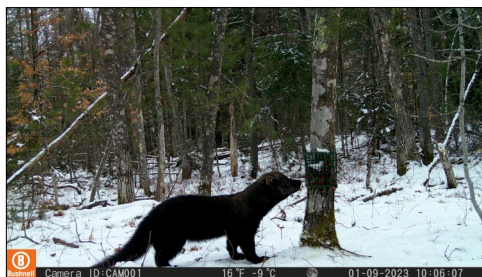
We are looking forward to our 2024 Annual Lyceum:

Maine Mammals and Their Habitats March 14, 21, & 28

Speakers: Nathan Bieber, Cory Stearns, and Shevenell Webb from MDIFW



*KLT Director Howard Lake
and KLT Advisor Ron Joseph
Photo: Brian Kent*



*Fisher at Hales Pond Woodland Preserve
Photo: MDIFW Game Camera*

KLT Property Stewards - 2023

Peggy & John Barnes, *Tyler CA*

Jane & Jim Brogan,
Mathews Wildlife Habitat

Tom Bartol, *Cobbossee Islands*

Richard Behr, *Seaward Mills CA*

Nancy Birkhimer, *Samuel Hutchinson CA*,
Small Burnham CA

Paul Brunelle, *Eastern River Preserve*

Leslie Burhoe, *Besse Historic CA*

Susan Burns & John Whitney,
Vienna Woods

Jim & Susan Caldwell, *Rolling Dam Brook*
Preserve & Donohoe Preserve

Susan Cottle & Peter Moulton, *Davidson*
Nature Preserve

Dave Courtemanch, *Ezra Smith Wildlife CA*

Tom Danielson, *Rosmarin & Saunders*
Family Forest

Jane & Stan Davis, *Perkins Woods*

Wes Davis, *Wakefield Wildlife Sanctuary*

Marilyn & Tom Dunn, *Holman CA*

Dennis & Stephanie Flanagan, *Oak Hill CA*

Dave & Carol Fuller, *Echo III*

Sarah P. Fuller, *Oatway Preserve &*
Weston Woods Preserve

Jane Giglio, *Sturtevant Farm Scenic Area*

Rita Hawker & Moe Parker, *Tyler CA*

Glenn Hodgkins, *Parker Pond Preserve*

David Howe, *Norris Island*

Fred Hurley, *Norris Island*

Jill Ippoliti, *Oatway Preserve, Weston Woods*
Preserve & Mount Pisgah CA

Jeffrey Janell, *Gannett Woods*

Ann Judd, *Mathews Wildlife Habitat*,
Echo I, II, & III, Avery-Smith

Kevin & Mary Kane, *Cobbossee Islands*

Marty Keniston, *Surry Hill Community Forest*

Theresa Kerchner & Jim Perkins,
Hales Pond Woodland Preserve

Brenda & Howard Lake,
Macdonald Woods CA

Amanda Lind, *Eastern River Preserve*

Ed Lake, *Curtis Homestead CA*

Marc Loiselle, *Peter Miller Woodland*

Jon Lund & Joan Sturmthal,
Cobbossee Islands

Tom Matthews, *Surry Hill Community Forest*

John McPhedran, *Torsey Pond Outlet CA*

John & Molly Melrose, *Vassalboro*
Wildlife Habitat

Cathy McCue, *Gott Pasture Preserve*

Cathie Murray & Mike Waters,
Vaughan Woods

Paula Nersesian, *Mount Pisgah CA*

Robert Peale, *Rosmarin & Saunders*
Family Forest

Jim Perkins, *KLT office*

Betsy & Nate Poulin,
Davidson Nature Preserve

Rosemary Presnar, *Effie Berry CA*

Norm Rodrigue, *Hutchinson Pond*

George & Judy Rogers,
Webber-Rogers Farm

Joe Sanders, *Hutchinson Pond*

Ansley & Janet Sawyer, *Howard Hill*

Andy Smith, *Hutchinson Pond*

Tim and Luvia Sniffen, *Torsey Pond Nature*
Preserve

Eric & Lynette Stinneford, *Perkins Woods*

Andy & Susie Tolman, *David Pond CA &*
St. Andre Fields

Andy Walsh, *Peter Miller Woodland*

Don Whittaker, *Reynolds Forest*



*Hales Pond Woodland Preserve trail volunteers with KLT staff and interns
left to right Madelyn, Tyler, Kevin, Lynette, Tucker, Mary, Eric, Janet,
Howard, Brenda, Cheryl, Martha, Paula, Ethan*



Fall 2022 Stewardship Workshop

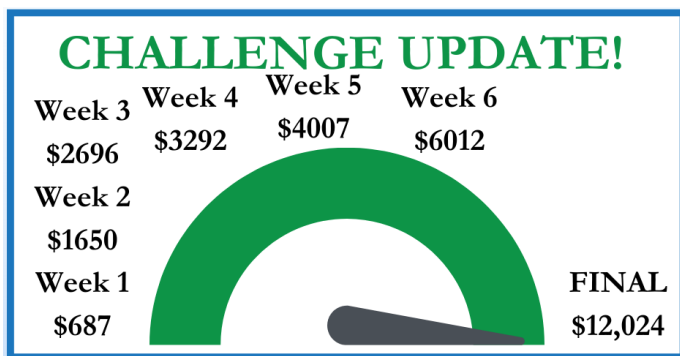
Congratulations to the 35th Anniversary Trail Challenge Participants!



To celebrate our 35th anniversary, KLT hosted a trail challenge to encourage visitors and community members to explore 10,000+ cumulative miles on area trails and properties—hiking, walking, running, biking, swimming, and paddling were all encouraged!

For every mile completed and recorded, KLT received \$1 for every adult and \$5 for kids 13 and under from local sponsoring businesses, with the proceeds going toward trail stewardship and development.

Participants (203) logged 5,155 miles, the equivalent of \$6012 donated to KLT. Upon completion of the challenge, local sponsoring business agreed to DOUBLE their impact, bringing the total to \$12,024 donated to KLT.



Top finishers:

Adults:

Total Miles: 4883

Hiking: Kevin Kane, 100 miles
Running: Kim Damon, 127 miles
Biking: Rebecca Lee, 229 miles
Paddling: Rita Cantor, 58 miles
Swimming: Peggy Barnes, 23 miles

Kids (13 and under):

Total Miles: 214

Hiking: Parker Baker-White, 12 miles
Running: Sage Baker-White, 22 miles
Biking: Parker Baker-White, 30 miles
Paddling: n/a
Swimming: n/a

Canine Participants:

Total Miles: 59

Barley, Molly, Penny, Sophie, & Zuzu

Past Annual Meeting Award Recipients

At past annual meetings KLT has recognized leaders in our community. We recognize our volunteers, property stewards, and other conservation leaders.

Member of the Year

1999 Theresa Kerchner

Outstanding Service:

2002 Jym St. Pierre & Jeff Pidot

2004 Mary Sturtevant

2007 Ann Judd

2008 Robert Mohlar

2014 Amy Trunnell

Forest Stewardship Award:

2014 Bruce Bell & Nat Bell

2015 Harold Burnett

2016 Vinnie Birtwell

2017 Ken Laustsen

2019 Mort Moesswilde

2022 Lloyd Irland

Stewardship Award:

2002 David Stevenson &

Andrew Bosworth

2003 Diana & Steve McLaughlin

2004 Tom & Donna Mickewich

2005 Stan & Jane Davis, Beth Craigie,
& George Viles

2006 Charlie Jacobs & Paul Johnson

2007 John & Molly Melrose

2008 Bob Mulliken & Ian McKinnon

2009 Brooke Barnes

2010 Jon Lund

2011 Phil Downes

2013 Cam Weaver

2014 Nicole Rhodes,

KLT Stewardship Director

2015 Milt Wright

2016 Norm Rodrigue

2017 Jed Davis

2018 Kevin & Mary Kane

2019 Andy Walsh

2021 Andy Smith

2022 Jill Ippoliti

Outstanding Volunteer

2004 Jim Connors

2005 Julie Mecham

2006 Ed Lake & Andy Tolman

2007 Bea Horne

2009 Clyde Walton

2010 Mort & Barbara Libby

2011 Jane Matriciano & Ann Judd

2012 Ginny Coady

2013 Ken & Sue Spalding

2016 Joyce Rivers

2017 Jane Davis & Donna Buck

2018 Brenda Lake

2019 Lorraine Ravis

2022 Cathy McCue

Howard Lake Lifetime Achievement Award

2018 Howard Lake

2019 Bob Mohlar

2020 Jim Connors

2021 Norm Rodrigue

2022 Amy Trunnell



Norm Rodrigue at Hutchinson Pond

Please let us know if you see any errors or omissions; our records may be incomplete or inaccurate!

Property Listings

A fee property is one owned by KLT.

AUGUSTA

Howard Hill Historical Park

164 acres

KLT Purchase in 2015

2017 Fee donated to City of Augusta, with easement held by KLT

Judy Kane Kennebec River Parcel

26 acres, fee

Protected 2014

Land Donors: Kevin Kane,

Ailene Kane Ettinger & Nolan Kane

CHESTERVILLE

Egypt Pond Conservation Area

(part in Vienna)

238 acres

Protected 2017

Easement Donor: Stewart Myers

FARMINGDALE

Vaughan Woods

29 acres

Protected 1990 & 2012

Easement Donors: George & Diana Gibson

Vaughan Homestead Foundation

FAYETTE

Baldwin Hill Conservation Area

80 acres, fee

Protected 2019

KLT Purchase

David Pond Conservation Area

67 acres

Protected 2012

Easement Donor: Mary Griffith Lynch

Echo Lake Watershed Preserve III

103 acres, fee

Protected 2009, 2016

KLT Purchase &

Land Donors: John Orestis &

Barbra Crowley

Hales Pond Woodland Preserve

74 acres, fee

Protected 2022

Land Donors: Albert Ferguson &

Marilyn Donnelly

Mathews Wildlife Habitat

17 acres, fee

Protected 1997

Land Donors: Alice Polis, Jane Brogan &

Stephanie Mathews

Meadow Brook Farm

256 acres

Protected 2012

Easement, Bargain Sale/Purchase:

Berndt & Elaine Graf

Oak Hill Conservation Area

134 acres, fee

Protected 2021 & 2022

KLT Purchase



Ron Hewett at the Oak Hill Overlook

Parker Pond Headland Preserve

307 acres, fee

Protected 2004, 2008, & 2014

Land Donors: Erika Karp, Tony Diller &

Glenn & Sarah Hodgkins

KLT Purchase

Sturtevant Farm Scenic Area

23 acres

Protected 2002

Easement Donor: Sturtevant Living Trust

Sturtevant Farm Scenic Area Addition

13 acres

Protected 2012

Easement Donor: Sturtevant Living Trust

Sturtevant Meadow Brook

54 acres, fee

Protected 2012, 2019

Easement Donor: Sturtevant Living Trust

KLT purchase

Surry Hill Conservation Area

337 acres, fee

Protected 2019, 2022

KLT Purchase

Land Donor: Tom Matthews



Surry Hill Conservation Area

Photo: Norm Rodrigue

GARDINER

Cobbossee Stream Conservation Area

15 acres

Protected 1997

Easement Donor: City of Gardiner

Joseph R. & Dorothy M. Donohoe Preserve

11 acres

Protected 2016

Easement Donor: Dorothy Washburne

Rolling Dam Brook Preserve

17 acres, fee

Protected 2016

Land Donor: David E. Lawrence

HALLOWELL

Effie L. Berry Conservation Area

8 acres

Protected 2018

Easement Donor: City of Hallowell

Vaughan Hillside

6 acres

Protected 1994

Easement Donors: Margaret, Theodore, May & Cecily Vaughan & Sarah Eagle

Vaughan Woods

168 acres

Protected 1990, 1994, 1999, & 2012

Easement Donors: George & Diana Gibson & Vaughan Homestead Foundation

LEEDS

Brackett-Longley Rare Plant Preserve

40 acres, fee

Protected 2000

Land Donor: Nancy Brackett

Curtis Homestead Conservation Area

360 acres, fee

Protected 2000

Land Donors: Ken Curtis & Rebecca Curtis Meredith

LITCHFIELD

Carter Pond Scenic Area

13 acres, fee

Protected 2007

Land Donors: Andrew J. Escoll & Tina S. Snider

Holman Conservation Area

75 acres

Protected 2011

Easement Donor: Helen Holman

Samuel Hutchinson Homestead Conservation Area

142 acres

Protected 2013

Easement Donors: Mark & Lindsay Nelsen

Small-Burnham Conservation Area

250 acres

Protected 2010

Easement Donors: Ina Small, Dusty Small & Teague Morris

Webber-Rogers Farmstead

Conservation Area

117 acres

Protected 2005

Easement Donors: George & Judy Rogers

MANCHESTER

Jamies Pond Conservation Area

110 acres, fee

Protected 1999

Transferred to MDIFW

Bog Pond Conservation Area

90 acres, fee

Protected 2007

Land Donors: Jeffery Timm,

Cynthia Spence & Donna & Tony Mancini

Transferred to MDIFW

Gannett Woods (part in Readfield)

120 acres, fee

Protected 2004

Land Donors: John & Patricia Gannett

Hutchinson Pond

81 acres, fee

Protected 2011

Land Donor: Central Maine Power



Trudie Lee and Deb Plegney

North Acres Conservation Area

132 acres, fee

Protected 2021

Land Donors: Trudie Lee & Deb Plegney

Wagner Woods Conservation Area

68 acres, fee

Protected 2023

Land Donors: Dick Wagner, MJ Wagner

Dedon, Scott Wagner

MONMOUTH

Jacobs Stanley Conservation Area

Protected 2021

Easement Donors: Charlie Jacobs &

Rebecca Stanley

Monmouth/Leeds Bog

23 acres, fee

Protected 2003

KLT Purchase

MOUNT VERNON

Ezra Smith Wildlife Conservation Area

163 acres, fee

Protected 2018

Land Donors: George and Linda Smith

& KLT Purchase

Torsey Shore Conservation Area

17 acre

Protected 2003

Easement Donor:

Mount Holly Incorporated

Camp Bearnstow, Parker Pond

15 acres

Protected 1994

Easement Donor: Ruth Grauert

Grauert Conservation Area

50 acres

Protected 1994

Easement Donor: Ruth Grauert

Ingham Stream Preserve

30 acres, fee

Protected 2010

Land Donor: Margot Coryell

PITTSSTON

Eastern River Preserve

50 acres, fee

Protected 2018 & 2020

Land Donor: Judith Schuppien &

Philip Brzozowski

KLT Purchase

READFIELD

Avery-Smith Shoreland

7 acres, fee

Protected 1991

Land Donor: Mary Ellen Avery

Echo Lake Watershed Preserve I & II

204 acres, fee

Protected 2004 & 2007

KLT Purchases

Fogg Farm Conservation Area

15 acres

Protected 1993

Easement Donor: Town of Readfield

Macdonald Woods (part in Wayne)

100 acres, fee

Protected 2003

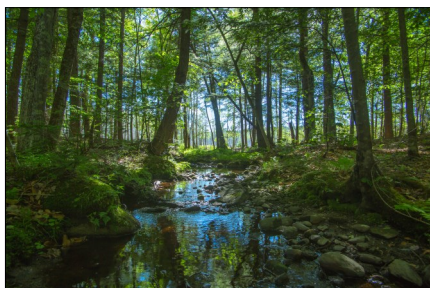
Land Donors: Douglas & Jessie Macdonald

Rosmarin and Saunders Family Forest

342 acres, fee

Protected 2016

Land Donors: John & Lisa Rosmarin,
Karrie Lykins & Kelly Byron



Rosmarin and Saunders Family Forest

Photo: Norm Rodriguez

St. Andre Fields

9 acres

Protected 1996

Easement Donors: Bep & John St. Andre

Tyler Conservation Area

50 acres

Protected 2003, 2021

Easement and Land Donors:

Mary & John G. Tyler

KLT Purchase

Torsey Pond Nature Preserve

92 acres

Protected 2003

Easement Donor: Town of Readfield

Torsey Pond Outlet Conservation Area

13 acres

Protected 2004

Easement Donor: Jean Scudder

Westman Woods Preserve

26 acres, fee

Protected 2006

Land Donor: Ilse Westman

Wyman Memorial Forest

40 acres, fee

Protected 1993

Land Donors: Heirs of Walter S. Wyman

SIDNEY

Reynolds Forest

43 acres, fee

Protected 2003, 2004, & 2023

Land Donors: Beatrice Kay Reynolds,
Roger Nevells, & Leann Diehl

VASSALBORO

Davidson Nature Preserve

97 acres, fee

Protected 2005

Land Donor: Elizabeth Davidson

Seawards Mills Conservation Area

44 acres, fee

Protected 2011

Land Donor: Elizabeth Cole

Vassalboro Wildlife Habitat

366 acres, fee

Protected 2004, 2007, 2010 & 2022

Easement/Land Donor: Anonymous

KLT Purchase

VIENNA

Egypt Pond Conservation Area

(part in Chesterville)

238 acres

Protected 2017

Easement Donor: Stewart Myers

Flying Pond Farm

40 acres

Protected 2003

Easement Donor: Estate of Ellen Miller

McGurdy Stream Preserve

15 acres, fee

Protected 2003

Land Donor: Town of Vienna

Peter Miller Woodland

60 acres, fee

Protected March 2013

Land Donors: Holly, Lynette, &

Robin Miller

Storer Farm Community Preserve

67 acres, fee

Protected 2020

Land Donors: Storer Community

Vienna Woods

72 Acres (60 acres fee)

Protected 2015, 2019

Easement and Land Donors:

Muffy and Jim Floyd

Whittier Shore Land

3.5 acres

Protected 2001

Easement Donors: Waine & Millie Whittier

WAYNE**Besse Historic Conservation Area**

65 acres, fee

Protected 1998, 2016

Land Donors: Albion Besse &

William Granville Besse

Gott Pasture Preserve

75 acres, fee

Protected 2003

Land Donors: Lincoln Ladd, Robert Ladd &

George Ladd

Macdonald Conservation Area

(part in Readfield)

100 acres, fee

Protected 2003

Land Donors: Douglas & Jessie Macdonald

Norris Island, Androscoggin Lake

27 acres, fee

Protected 1997

KLT Purchase

Perkins Woods

14 acres, fee

Protected 2001

Land Donors: John & Pat Perkins

Pickerel Pond Conservation Area

25 acres, fee

Protected 2011

KLT Purchase

WEST GARDINER**Wakefield Wildlife Sanctuary**

115 acres, fee

Protected 2017

Land Donor: Kendra Wakefield Shaw



Wakefield Wildlife Sanctuary,

Photo: Brain Kent

WINTHROP**Hodgdon Island Preserve,****Cobbossee Lake**

17 acres, fee

Protected 1994

Land Donors: Elliott & Anne Farr

Sudds Memorial Forest

40 acres, fee

Protected 1996

Land Donors: Heirs of Weston &

Verna Sudds;

Transferred to Augusta Water District

Horseshoe Island Preserve

Cobbossee Lake

48 acres, fee
Protected 1997, 2000, 2003 & 2016
Land Donors: Jon Lund, Robert Peck,
Elliott & Anne Farr, & Anonymous
KLT Purchases

Little Cobbossee Oatway Preserve

90 acres, fee
Protected 2012
KLT Purchase

Perry Island Preserve, Cobbossee Lake

6 acres, fee
Protected 1993
KLT Purchase

Mt. Pisgah Community

Conservation Area

952 acres, fee,
Protected 1995, 1998, 2000, 2002, 2003,
2005, 2010, 2012, 2017, 2022, 2023
161 acre easement, protected 2005 & 2010
Land donor: Robert & Marie O'Malley;
Donna & Owen Buck; & KLT Purchases
Easement Donors: Michael Simoneau
& Town of Winthrop & KLT Purchases

Weston Woods Preserve

55 acres, fee
Protected, 2020
KLT Purchase

Notes from the Property Boxes

“One of our favorite short walks.

Thank you!”

- *Macie from Sidney, Reynolds Forest 2021*

“Great walk and lovely water views”

- *The Sanyers, Vassalboro Wildlife Habitat 2021*

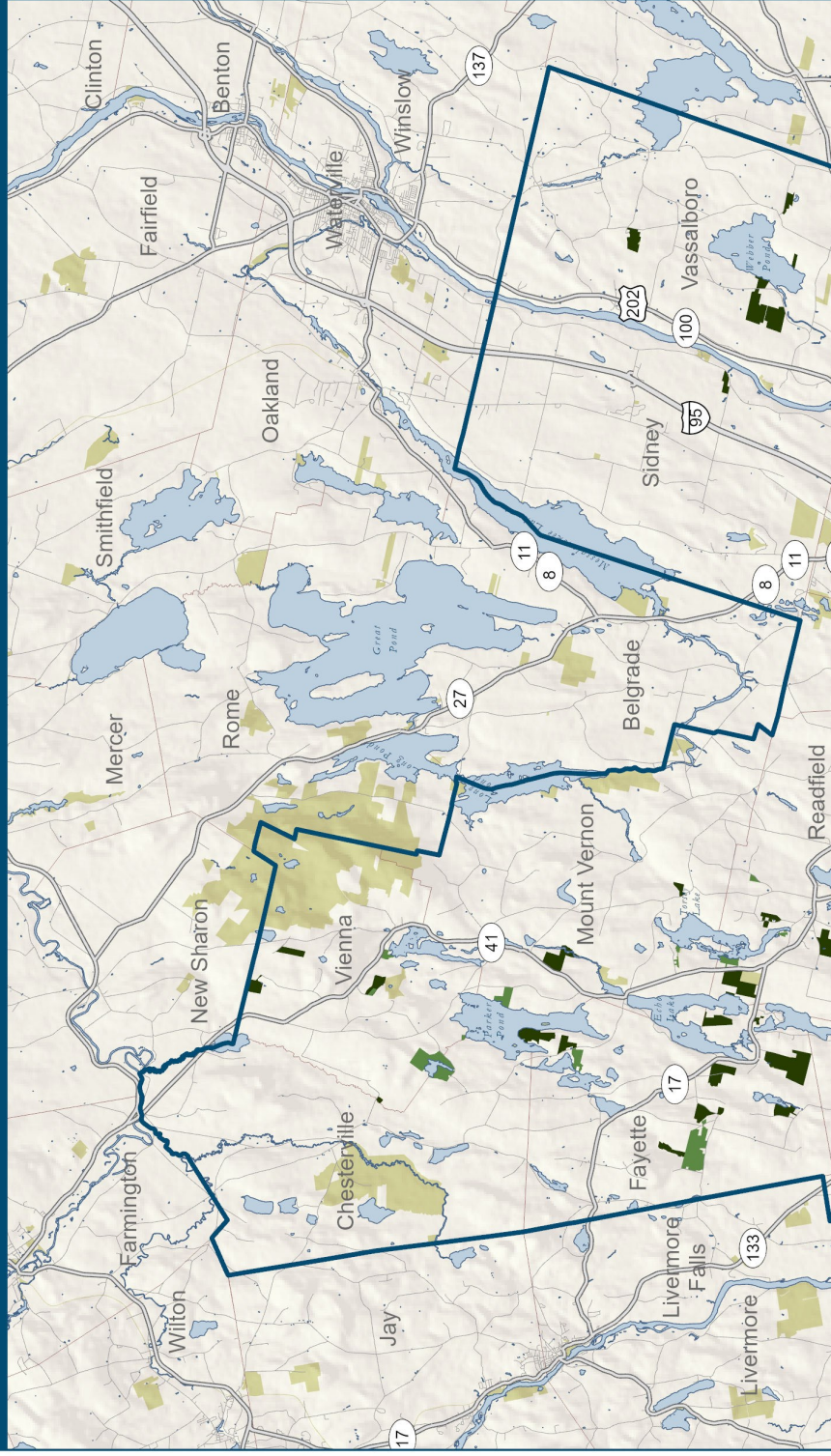
“So lovely, every time a treasured walk.”

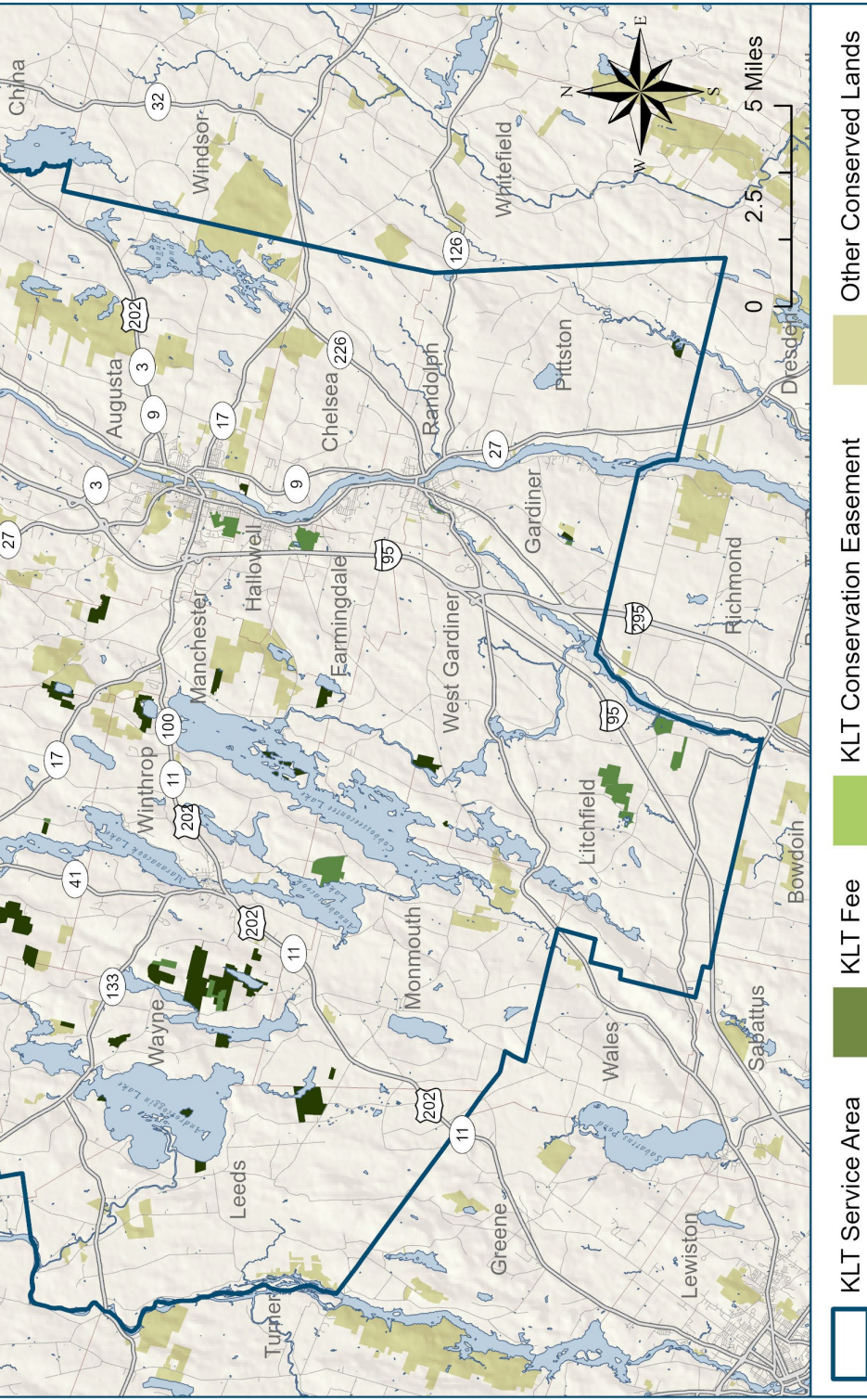
- *Jim, Ridgely, and Lily, Vienna Woods 2021*

“Absolutely gorgeous. It's a rustic cabin, located just a few feet from the water (gotta love historic buildings). The woods were filled with mushrooms galore. The water was great for swimming. We canoed up the creek and found loads of gorgeous marshy gardens, FILLED with wildflowers and birds and dragonflies. Already planning my next trip! This will be a place I return to as often as I can.”

- *Claire B, 2023 Wakefield Wildlife Sanctuary*

Kennebec Land Trust Service Area





Land Trust Accreditation

The Land Trust Accreditation Commission is a program that promotes national standards for ensuring permanence in the conservation of important natural places and working lands. In August 2018 it announced that KLT had achieved first-time accreditation.

The commission, an independent program of the Land Trust Alliance, conducts an extensive review of each land trust applicant's policies and programs. In awarding KLT accreditation, the commission signified its confidence that KLT's lands will be protected forever. Accreditation also underscored KLT's continued commitment to honoring the intent of our land donors while also providing public access to beautiful conservation woodlands, lakes, and streams. Five years later, KLT is seeking reaccreditation.

You may be wondering why we devote so much time to this process. National accreditation is a method of standardizing land trust procedures, and for us the process offers a valuable means of self-assessment. As we continue to grow, are we keeping our house in order? Are our stewardship, financial, and legal records current and appropriate? Do we have updated policies in place?

President Janet Sawyer, Immediate Past President Kim Vandermeulen, and KLT staff members completed the rigorous accreditation application in March. As part of this process we provided extensive documentation to the Accreditation Commission and are now subject to a comprehensive third-party evaluation prior to achieving reaccreditation. Stay tuned for our fall update, and please contact Theresa if you have questions about the accreditation program.



*Kim Vandermeulen
2018 Accreditation*

Local Wood WORKS



Supported by the Elmina B. Sewall Foundation



For the past ten years, KLT has been the lead partner in Local Wood WORKS, a statewide initiative to advance forest-based local economies and support the conservation and sustainability of Maine's woodlands. The initiative actually grew out of a strategy to promote forestland conservation on a landscape level in just KLT's service area.

There are still bus seats available for the Affordable Housing + Local Sourcing tour on September 21, the latest in a series of tours in different parts of the state. The upcoming tour includes visits to a Lewiston apartment building built to Passive House energy standards, a South Paris modular home builder, and a sustainably managed community forest in Poland, among other sites of interest.

For more information, visit www.localwoodworks.org.

For anyone interested in buying Maine-grown lumber, please see the Maine Wood Guide, a directory of sawmills, shingle mills, wood manufacturers, and other suppliers at www.localwoodworks.org. The Product Master Spec for local wood, a technical document oriented to the needs of architects, engineers, and specifiers, is also available.

With support from the Elmina B. Sewall Foundation, KLT and its partners are working with a commitment to:

- sustainable forestry
- land stewardship
- strong and resilient local economies
- conservation of both working woodlands and ecological reserves
- reduced energy consumption and transportation costs based on local products
- providing support to landowners, loggers, processors, manufacturers, and consumers

Sustainable Forestry Education Program

Shortly after KLT acquired the 360-acre Curtis Homestead Conservation Area in Leeds, local logger Nat Bell suggested that harvesting timber on the property would be a great opportunity to educate people about sustainable forestry. Since 2009 more than 1,500 Central Maine students, parents and teachers have participated in KLT's annual educational program.

On this annual field trip, students can observe a timber harvest; see a portable sawmill demonstration; learn more about sustainable forestry and how loggers can protect soil, water, and wildlife; participate in hands-on forestry and Maine wildlife activities; and explore careers related to forestry and the forest products business.

Nat says, "We always ask the kids, 'What do you guys do in the woods?' Some people hunt. Some people hike. Some people ski. Some people cut firewood. Some people play tag. In a properly managed forest, you can do all of those things. You can grow big, high-value trees. You can have great wildlife habitat for hunting or birdwatching. You can have great trails to go skiing, hiking, walking – anything."

This program is well received by both the teachers and students. Edward Little teacher Peter Marris, commented "The Curtis Forestry Program has helped my high school students deepen their understanding of forestry for two years. My students are always excited to go on this field trip. This program brings to life what I'm trying to teach in the classroom. It gives my students a chance to see forestry practices firsthand and learn from people who actually do it for a living. This is something I can not provide in the classroom."

The following individuals and organizations generously contributed time and resources for KLT's 2023 forestry program:

Nat Bell, Logger, Leeds

Julie Davenport and Shane Duigan, Maine Forest Service District Foresters

Ken Laustsen, retired Maine State Forest Service Biometrician



Nat Bell and Ken Laustsen with a high school class at the Curtis Homestead

Kennebec Land Trust Legacy Society

The Trust's Legacy Society is a group of forward-thinking KLT supporters who care about the future of land conservation in central Maine and have chosen to make planned gifts that ensure our long-term success as a regional conservation leader. We thank the following individuals and families for their contributions to our Legacy Society. If you would like more information about making planned gifts to KLT, please be in touch with Theresa Kerchner, Executive Director, at the KLT office: 207-377-2848 or tkerchner@tklt.org



Mt. Pisgah Conservation Area Sunset, Photo: Zach Harder

Thank you KLT Conservation Leaders!

KLT's seventy-six Conservation Leaders are far-sighted members who are able and willing to give \$1,000 or more annually in combined membership dues or in pledge donations. These donors are part of a committed group of members who understand the Trust's current and future conservation work and financial sustainability on larger long-term gifts. We deeply appreciate their support of KLT and land conservation.

Thank You to Our Supporting Foundations & Funds in 2022 - 2023

Donald & Martha Kent Fund
Douglas & Jessie Macdonald Gift Fund
Elmina B. Sewall Foundation
Farnsworth Fund of the
Essex Community Foundation
Farr Harvey Fund
Fields Pond Foundation
Helen & George Ladd Charitable
Corporation
John C. Orestis & Barbra M. Crowley
Fund of the
Maine Community Foundation

Kennebec Savings Bank
Maine Community Foundation
Margaret Burnham Charitable Trust
McGehee-Sniffen Fund
Max Davis Giving Fund
Silverseed Fund of the
Maine Community Foundation
The Snider Foundation
Southern Maine Conservation
Collaborative

This list includes foundations and donor-advised funds that have given \$1,000 or more to KLT between July 1, 2022 and October 10, 2023

Municipal Members

We consider all of our service area municipalities to be valued partners, and we could not achieve our conservation goals without their support. Some communities are able to make a financial contribution or donate land or easements. In 2022 - 2023 these communities were:

- City of Hallowell
- Town of Manchester
- Town of Monmouth
- Town of Readfield
- Town of Vassalboro
- Town of Vienna
- Town of Wayne

2022 - 2023 Business & Community Partners

Conservation Leader

Alternative Manufacturing, Inc
Amy P. Trunnell, CPA
Augusta Fuel Co.
Camp Androscoggin
Camp Laurel
Camp Vega
Camp Winnebago
EP Wealth Advisors
Everett J. Prescott, Inc.
(Team EJP Employees)
Farris Law
Franklin Savings Bank
G & E Roofing
Hammond Lumber
Kennebec Cabin Company
Kennebec Savings Bank
Lake and Denison Attorneys
Longfellow's Greenhouses
LPK
Maine Evergreen Hotel
Maine State Credit Union
Northcenter Performance Food Group
Sprague & Curtis Real Estate
Two Trees Forestry
Winthrop Veterinary Hospital

Kennebec County Champion

A Lakeside Studio Pottery
Beth Jones Yoga
Big White Barn
Family First Funeral Homes
Fieldstone Gardens
JF Scott Construction Company

J.S. McCarthy Printers
Levey, Wagley, Putman, & Eccher, PA,
Attorneys at Law
McKee Law
Old Port Advisors
One River CPAs
Stantec Consulting
van der Brew

Trail Blazer

Asset Real Estate Management
Harvest Time Natural Foods
Macomber, Farr & Whitten
North Country Rivers
O&P Glass

Business Partner

Blanchard Cabinetmakers
Camp Runoia
Creative Conservation, LLC
Evergreen Dental Associates
Kennebec Valley Chamber of Commerce
Readmont Lumber
Thomas Agency
Winthrop Area Chamber of Commerce
Winthrop Fuel Company

**Please support our generous
Business Partners with your business.**

*This list reflects donations between
July 1, 2022 and October 10, 2023*



Gott Pasture Preserve, Photo: Jane Davis

The Kennebec Land Trust Publications

***Take a Hike!* Hiking Guide**

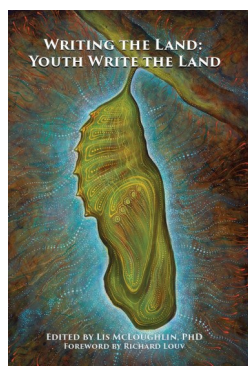
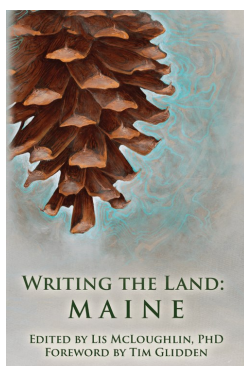


The beautiful second edition of *Take a Hike!*, published in 2020, features fifty miles of trails and includes twelve new properties, as well as updates to the trails and maps featured in the 2014 edition. These thirty-two conservation lands include hilltop and shoreline properties and lake islands. Each page features a unique property and includes directions, a map showing trails and lake access points, and recommended public uses and recreational opportunities.

In upcoming years KLT will be publishing additional property pages for the *Take a Hike!* guide, including Hales Pond Woodland Preserve, Oak Hill Conservation Area, Weston Woods Preserve, and more.

Writing the Land: Maine Writing the Land: Youth Write the Land

We're excited to have been included in the 2022 and 2023 writing the land publications. These books are anthologies of land trusts and poets (youth and adults) who wrote poems inspired by their adopted lands throughout Maine. Information about the land trusts and lands open to the public is included within each chapter, along with the poems.



The KLT sections features poetry and artwork inspired by the Curtis Homestead Conservation Area, the Davidson Nature Preserve, the Eastern River Preserve, and the Gott Pasture Preserve.

2023 Annual Meeting

Our Annual Meeting on August 20 was an inspiring celebration of 35 years conservation, hosted by Camp Androscoggin and sponsored by Kennebec Savings Bank, Maine Evergreen Hotel, and Performance Foodservice - Northcenter. Members and guests had opportunities to hike at the nearby Perkins Woods Preserve, swim in Androscoggin Lake, enjoy live music by the Sandy River Ramblers, learn more about our summer interns' research project and more.



Photographs: Theresa Kerchner, Marie Ring and Andy Tolman

Awards & Reconditions

Land Donor Awards

Leann Diehl

Donna & Owen Buck

Dick Wagner, Scott Wagner, &

Mary Jo Wagner Dedon

President's Award

Janet Sanyer

Stewardship Award

Dave Courtemanch

Outstanding Volunteer Award

Jim Perkins

Howard Lake Lifetime Achievement Award

Bob Marvinney

KENNEBEC LAND TRUST CASH BASIS FINANCIALS

JUNE 2022 AND JUNE 2023

	<u>FYE</u> <u>6/30/2022</u>	<u>FYE</u> <u>6/30/2023</u>
<u>INCOME</u>		
<u>Operations Activity</u>		
<u>Operations Income</u>		
Memberships, Sponsors	\$ 239,586	\$ 221,609
Hiking Guide Sponsorships	17,000	11,000
Donor Designated Contributions	66,567	68,660
In Memoria	5,735	15,136
Conservation Burial Services	36,987	12,863
Other	16,013	15,000
Net Return on Investments	440	1,337
Total Operations Income	382,328	345,605
<u>Operations Expenses</u>		
Staff	259,429	264,959
Administration	59,429	70,109
Programs and Stewardship	59,065	55,474
Hiking Guide Printing	14,879	-
Total Operation Expenses	392,802	390,542
<u>Net Operations before</u>		
<u>Transfers</u>	(10,474)	(44,937)
<u>Trsfrs from Stwd/Edwmt/</u>		
<u>Cons</u>	10,474	44,937
<u>ANNUAL OPERATIONS</u>	-	-
<u>Restricted and Other Funds</u>		
Donations	635,021	513,663
Net Return on Investments	(183,273)	74,939
Expenses	(71,446)	(54,823)
Release to Operations from		
Donor Restriction &		
Spending Policy	(74,422)	(107,460)
<u>Net Restricted and Other</u>		
<u>Funds</u>	305,880	426,319
<u>Depreciation</u>	(16,084)	(21,511)
Net Assets beginning of year	7,747,591	8,037,387
<u>Net Assets end of year</u>	\$ 8,037,387	\$ 8,442,195

Annual Operations		
Actual	Actual	Budget
<u>FYE 2022</u>	<u>FYE 2023</u>	<u>FYE 2024</u>
\$ 392,802	\$ 390,542	\$ 395,121

	<u>FYE</u> <u>6/30/2022</u>	<u>FYE</u> <u>6/30/2023</u>
<u>BALANCE SHEET</u>		
<u>SUMMARY</u>		
Cash	\$ 72,710	\$ 62,411
Conservation Fund	238,048	386,482
Stewardship Fund	638,764	646,043
Endowment Fund	220,224	240,968
Donor Restricted	505,547	506,540
Total Cash/Investments	1,675,293	1,842,444
Other	75	575
Net Property/Bldgs/Easements	6,376,112	6,602,970
Total Assets	8,051,480	8,445,989
Current liabilities	14,093	3,794
PPP loan	-	-
Mortgage	-	-
Total Liabilities	14,093	3,794
Net Assets end of year	\$ 8,037,387	\$ 8,442,195
FISCAL YEAR 2022-23		
SIGNIFICANT LAND		
ACQUISITIONS:		
Hales Pond, Reynolds		



Amy Trunnell, KLT Treasurer, 2015 Annual Meeting Photo: © Jym St. Pierre

KLT Staff

Baylee Bachelder
Volunteer and Office Manager
bbachelder@tklt.org



Tyler Keniston
Stewardship Manager
tkeniston@tklt.org



Theresa Kerchner
Executive Director
tkerchner@tklt.org



Marie Ring
Director of Membership &
Programs
mring@tklt.org



Jean-Luc Theriault
Stewardship Director
jtheriault@tklt.org



Victoria Vandervort
Seasonal Stewardship Assistant
vvandervort@tklt.org



Ethan Ross
2023 Summer Intern
eross@tklt.org



Tucker Schulze
2023 Summer Intern
tschulze@tklt.org





*(left) Reynolds Forest Diehl Addition
7 acres, February 2023
Photo: Phil Downs*



*(right) Downing Woods Mt. Pisgah Addition
36 acres, July 2023
Photo: Jane Davis*



*(left) Wagner Woods Conservation Area
68 acres, August 2023
Photo: Norm Rodrigue*



*(right) Hales Pond Woodland Preserve
72 acres, August 2022
Photo: Marie Ring*