

VIENNA WOODS

In March of 2015, Muffy and Jim Floyd donated a 71-acre conservation easement to KLT that will protect valuable wildlife habitat, water quality, working forestland, and hayfields forever.

The Vienna Woods Conservation Area is part of a large block of relatively unfragmented woodland that has been valued by people, both resident and migratory, for thousands of years. Located in the Flying Pond watershed at the southern edge of the western Maine foothills, this conservation property contributes to the ecological and economic resilience of the region.

The Pinnacle, a scenic viewpoint with a granite bench, provides beautiful views of Vienna and McGaffey Mountains to the east.

In September of 2019, the Floyds donated the 60-acre Vienna Woods property, minus the Homestead Area to KLT. The Homestead Area is still protected with a KLT conservation easement, but is not open to the public.



Jane Davis

VERNAL POOL

The Vienna Woods Conservation Area includes valuable forested freshwater wetlands and a significant vernal pool.

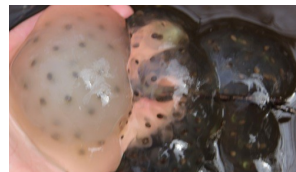


Norm Rodrigue

Vernal pools are naturally occurring, temporary to semi-permanent pools that form in shallow depressions in forested landscapes. They provide the primary breeding habitat for wood frogs, blue-spotted and spotted salamanders, and fairy shrimp, as well as habitat for other wildlife, including several endangered and threatened species.



The large vernal pool below the Hemlock Trail supports breeding populations of wood frogs and spotted salamanders.



wood frog egg masses (top)
spotted salamander masses (above) - Rebecca Stanley

THE KENNEBEC LAND TRUST

Founded in 1988, **The Kennebec Land Trust (KLT)** works cooperatively with landowners and communities to conserve the forests, lakes, streams, wetlands, fields, and wildlife that help define central Maine. KLT protects and stewards land permanently, offers access to conserved properties, provides opportunities for people to learn about and enjoy the natural world, and works with partners to support sustainable forestry and farming.



Norm Rodrigue

With the support of over 1,100 member households, KLT has conserved over 6,900 acres with more than 15 miles of undeveloped shoreline. Our properties feature more than 50 miles of trails for everyone!

Donations to KLT support land conservation, trail development, and nature and conservation education programs.

Thank you for your support!

A full listing of Kennebec Land Trust properties and an interactive map with directions can be found at our website:

**PO Box 261; 331 Main St
Winthrop, ME 04364**



VIENNA WOODS CONSERVATION AREA



Matt Silberman

**KLT conservation easement donated by
Muffy and Jim Floyd**

March, 2015

**71 acres of woodlands,
wetlands, and farmland**

HIKING TRAILS

Access to the Vienna Woods trailhead is from Town House Road (Route 41) to the Trask Road, which ends with the driveway to the Homestead Area on the left.



Norm Rodrigue

Hikers can park in the small parking area just inside the Homestead Area and follow the discontinued portion of Trask Road to the trail turnoff on the left. Parking is also available along the edge of the Trask Road.

The Vienna Woods Trail climbs along the spine of a ridge that was once called the Devil's Backbone, drops through a mixed hardwood forest, and loops through a stand of mature hemlock, passing a vernal pool and several areas of exposed bedrock in the Hemlock Loop. For more experienced hikers, a steep trail (labeled the Pinnacle Access Trail on the map) heads back uphill to the parking lot.



Norm Rodrigue

PRE-HISTORY & HISTORY

"The first human inhabitants [of Vienna]... were Abnaki Indians; their name means "light in the east," or "morning", and they include members of the Micmac, Malicite, Passamaquoddy, Arosaguntacook, Sokoki, Penobscot and Norridgewock tribes. (Flying Pond reportedly received its name from Abanakis who...had a hard time finding it when they came back to look for it.)" - Mark Rains

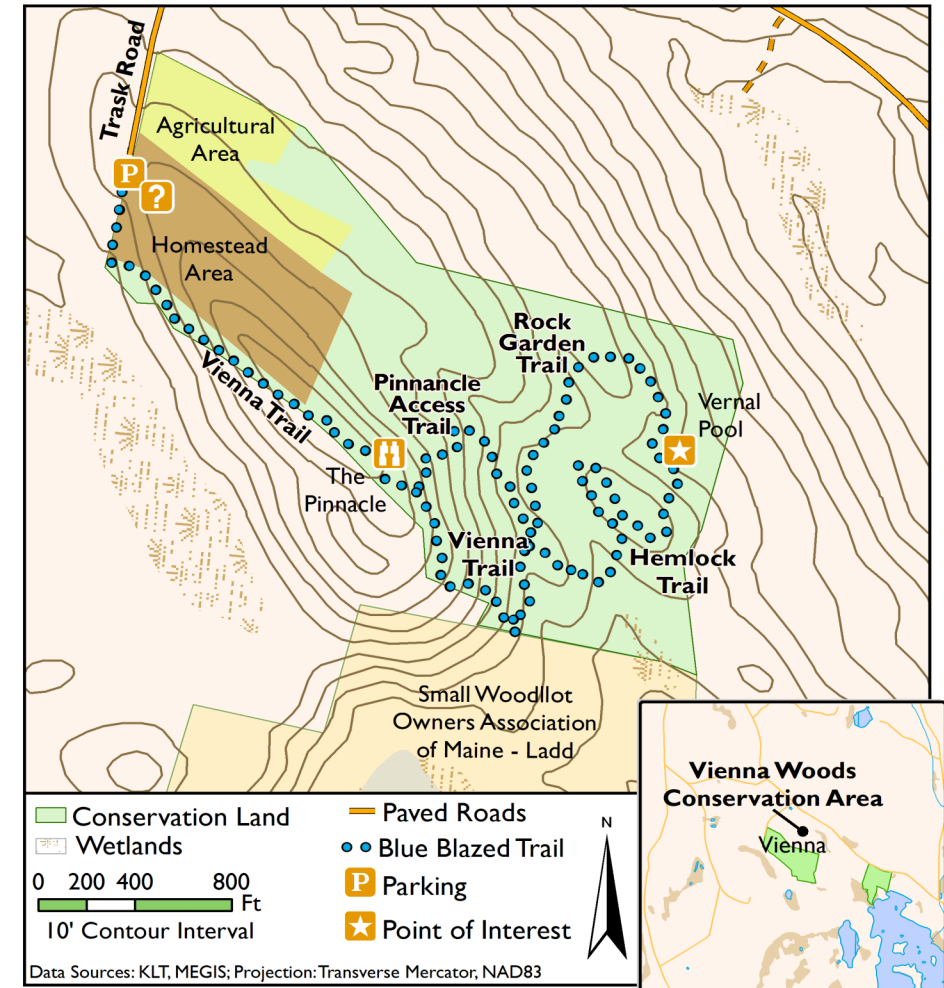
"This town, together with what is now a part of Fayette and Chesterville, was... named Wyman's Plantation by Nathaniel Whittier who lived in what is now Readfield and Jedidiah Prescott who lived in what is now Winthrop. They divided it into lots, and persuaded people to settle them. The part which is now Vienna was then called Goshen until Feb. 20, 1802, when it was incorporated as a town and named Vienna." - Ivy Woodcock



Historic Homestead
view to the northeast from the ridgeline; date unknown

The current Homestead Area was a working farm from the 1800s to the mid-1900s. Pottery shards and pieces of metal from old equipment can be found in the soil, and a hand-dug well and cellar hole were filled in for safety reasons. Local residents reported that during WWII the summit of the ridge was cleared and a Civil Defense Observation Tower was erected on it.

Vienna Woods Conservation Area, Vienna



Directions: From Vienna Village: Take Route 41 northwest from the intersection with Kimball Pond Road. At just over 1.6 miles, turn left onto Trask Road. Continue on Trask Road for 0.4 miles until you reach the end of the paved road. Trailhead parking will be on your left.

From the North: Take Route 41 south from Farmington Falls. Follow Route 41 for 6.8 miles until you reach Trask Road on your right. Continue on Trask Road for 0.4 miles until you reach the end of the paved road. Trailhead parking will be on your left.

Public Uses: Please respect the landowners' request that public access be limited to areas outside the Homestead Area. Due to trail limitations, horseback riding, mountain biking, and motorized vehicles are not permitted. Hunting is allowed on the portion of the property that KLT owns. KLT does not own the Homestead Area.

Brochure design and text: Jean-Luc Theriault, Theresa Kerchner, and Janie Matrisciano, with information from the Historical Society of Vienna.